

# MODEL 208

## FLOOR TO FLOOR SLIDER BED



If a rugged, industrial material handling system is required, consider using the Titan **Model 208 Floor to Floor Slider Bed conveyor** in your system. The heavy-duty 8" diameter rubber lagged (vulcanized) drive pulley gives that extra capacity for heavier loads and longer incline sections. The optional 3' long power feeder adds flexibility for in-line flow of your product. The standard double noseover is adjustable up to a 30° incline. The Titan Model 208 has all of the rugged design features of our proven Model 108 slider Bed and standard optional equipment is available but if your application requires special modification, Titan Conveyors is willing and happy to accommodate your requirements.

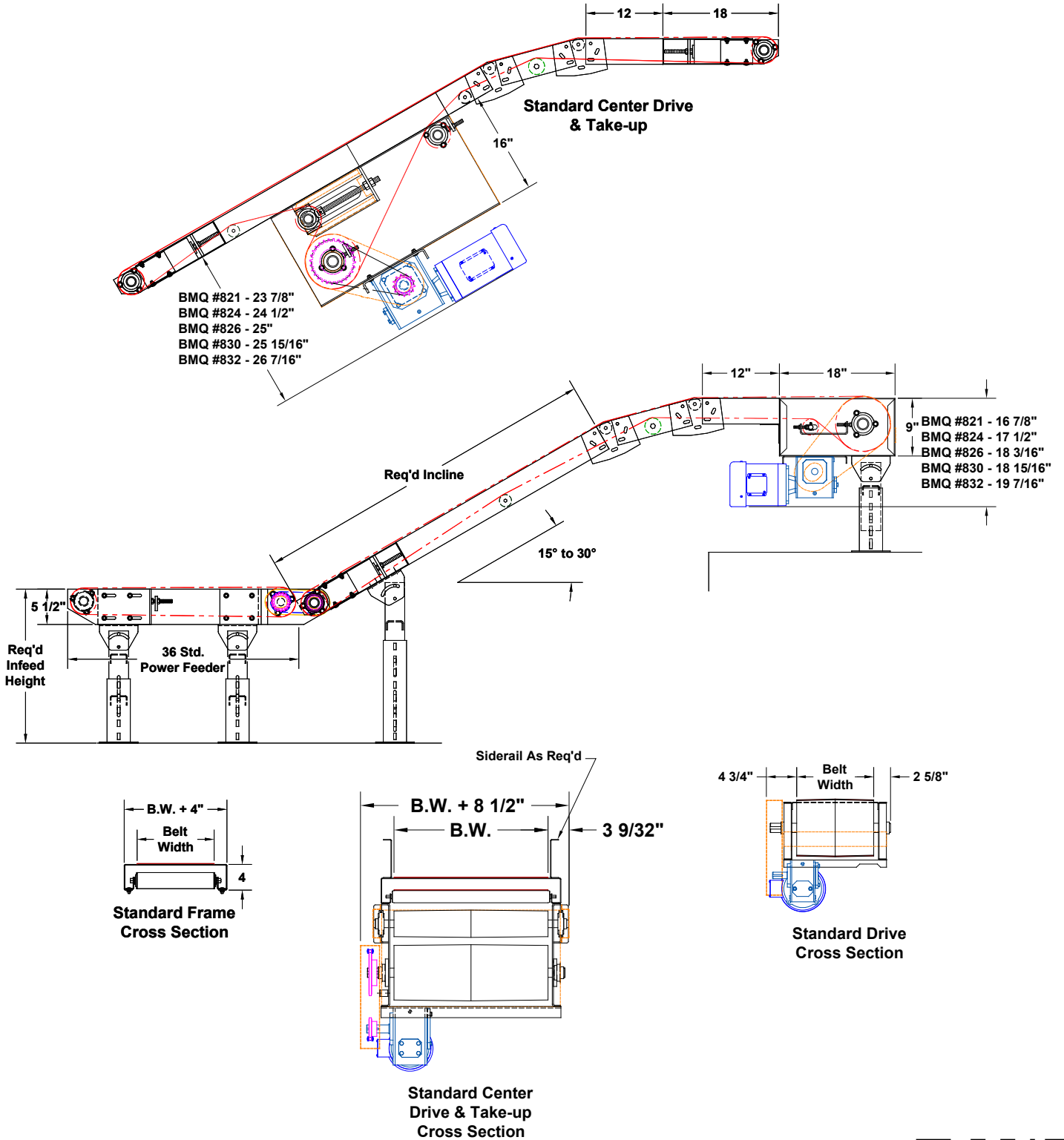


MODEL 208 FLOOR TO FLOOR SLIDER BED CONVEYOR		
	Standard	Options
<b>Belt Widths</b>	12" to 48"	Others available
<b>Lengths</b>	5' min. to 50' max.	3' min to 50' max
<b>Belt Type</b>	Black 2-ply rough top	Gum rubber
<b>Drive</b>	1/2 HP 230/460/3/60	3/4, 1, 1-1/2, 2, 3, HP, 115/230/1/60, TEFC, wahsdown, severe duty, inverter duty, brake motor
<b>Drive Pulley</b>	8" dia. crowned, rubber lagged	
<b>Frame</b>	4" deep formed 12 ga.	
<b>Optional</b>		
H.P., drive location, speed, fixed or variable speed, controls, power feeder, belt type, center drive & take-up, transfer rollers, bolt-on end stop, belt scrapper, galvanized, stainless, siderails, supports, casters, other belt types, siderail skirting, special paint		
Many other options available, consult factory representative		

**NOTE: Specifications subject to change without notice**

# MODEL 208

## FLOOR TO FLOOR SLIDER BED



735 Industrial Loop Road • New London, WI 54961-9612  
 920-982-6600 • Fax 920-982-7750 • Toll Free 800-558-3616  
 Website: [www.titanconveyors.com](http://www.titanconveyors.com) • Email: [sales@titanconveyors.com](mailto:sales@titanconveyors.com)

