

Company

Phone

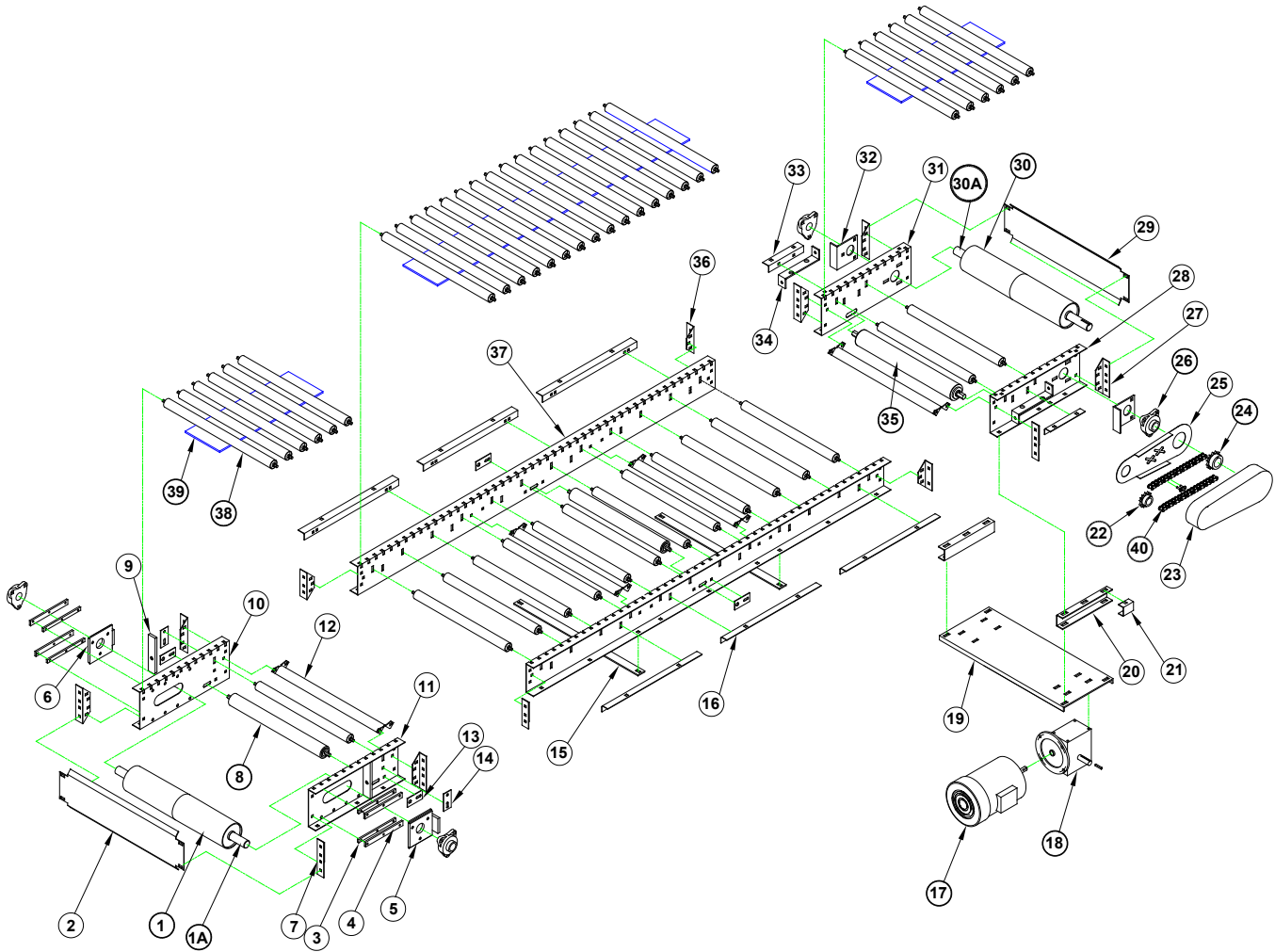
Contact

Conveyor

E-mail

Serial Number

To Request a Quote for Spare Parts - Fill in the Information below & Quantity of each Part & Click on the Email Button



• Recommended spare parts to be stocked at your location

Part

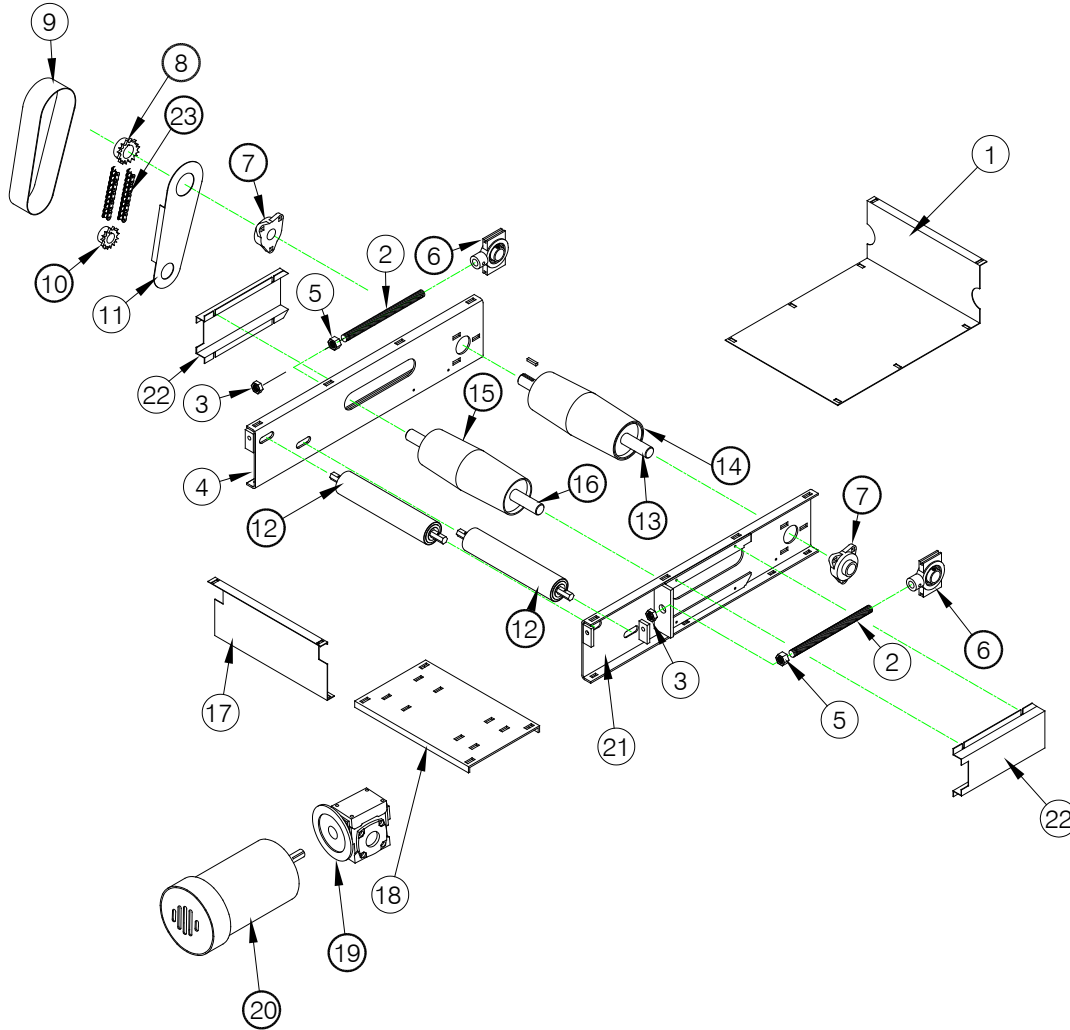
Number - Description - Qty.

- 1. • INFEED PULLEY
- 1A. • INFEED PULLEY SHAFT
- 8. • RETURN ROLLER
- 17. • MOTOR
- 18. • REDUCER
- 22. • DRIVE SPROCKET
- 24. • DRIVEN SPROCKET
- 26. • 3-BOLT FLANGE BEARING
- 30. • DRIVE PULLEY
- 30A. • DRIVE PULLEY SHAFT
- 35. • SNUB ROLLER
- 38. • DECK ROLLERS
- 39. • BELT
- 40. • ROLLER CHAIN

Other Parts

- 2. INFEED END GUARD
- 3. INSIDE TAKE-UP PLATE RETAINER
- 4. OUTSIDE TAKE-UP PLATE RETAINER
- 5. INFEED PUSHER PLATE R/H
- 6. INFEED PUSHER PLATE L/H
- 7. CONNECTOR BRACKET
- 9. INFEED PUSHER PLATE
- 10. INFEED FRAME L/H
- 11. INFEED FRAME R/H
- 12. FRAME SPREADER
- 13. RETURN ROLLER BRACKET
- 14. PRESSURE ROLLER BRACKET
- 15. LOWER FRAME SPREADER
- 16. ADJUSTMENT BRACKET
- 19. MOTOR BASE
- 20. MOTOR BASE SPACER CHANNEL
- 21. GUARD BACK BRACKET
- 23. GUARD FRONT
- 25. GUARD BACK
- 27. DRIVE & INFEED CONNECTING BRACKET
- 28. DRIVE FRAME R/H
- 29. DRIVE END GUARD
- 31. DRIVE FRAME L/H
- 32. BEARING PUSHER PLATE
- 33. ADJUSTMENT BRACKET 1' FRAME
- 34. DRIVE PUSHER BRACKET
- 36. SPLICE ANGLE
- 37. FRAME SECTION

To Request a Quote for Spare Parts - Fill in the Information below & Quantity of each Part & Click on the Email Button



• Recommended spare parts to be stocked at your location

Part Number	Description	Qty.
6.	• TAKE-UP BEARING 1 3/16" DIA.	
7.	• BEARING, 3 BOLT FLANGE	
8.	• DRIVEN SPROCKET	
10.	• DRIVE SPROCKET	
12.	• SNUB ROLLER	
13.	• DRIVE SHAFT	
14.	• DRIVE PULLEY	
15.	• TAKE-UP PULLEY	
16.	• TAKE-UP SHAFT	
19.	• REDUCER	
20.	• MOTOR	
23.	• ROLLER CHAIN	

Other Parts

- 1. LARGE GUARD C.D. & T.U.
- 2. THREADED ROD
- 3. HEX JAM NUT
- 4. C.D. & T.U. PLATE L/H
- 5. HEX NUT
- 9. GUARD FRONT
- 11. GUARD BACK
- 17. SMALL GUARD C.D. & T.U.
- 18. MOTOR BASE
- 21. C.D. & T.U. PLATE R/H
- 22. TAKE-UP GUARD