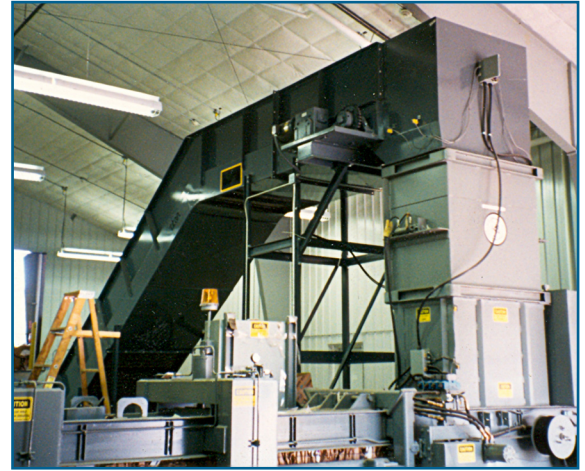


MODEL 661

CHAIN EDGE BELT CONVEYOR



Model 661 Chain Edge Belt Conveyor utilizes heavy-duty 6" pitch chain along with heavy-duty P. V. C. or rubber belting for solid waste handling. The Model 661 is ideally suited for corrugated and newsprint recovery facilities. The combination of chain and belting offers several advantages over typical hinged steel belt conveyor - reduced horsepower requirements and overall cost. The 6" pitch chain features 3" diameter single flanged rollers with hardened bushings and hardened pins. Heavy-duty steel cleats are typically mounted on 36" or 48" centers. The unit features an open type frame with access panels which allow for easy clean out and inspection. Heavy-duty 6" pitch sprockets assure positive drive.



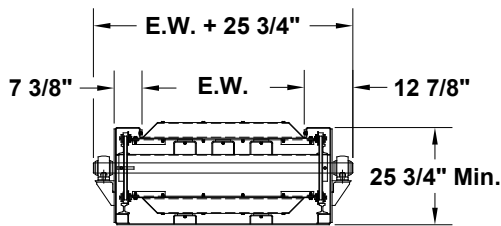
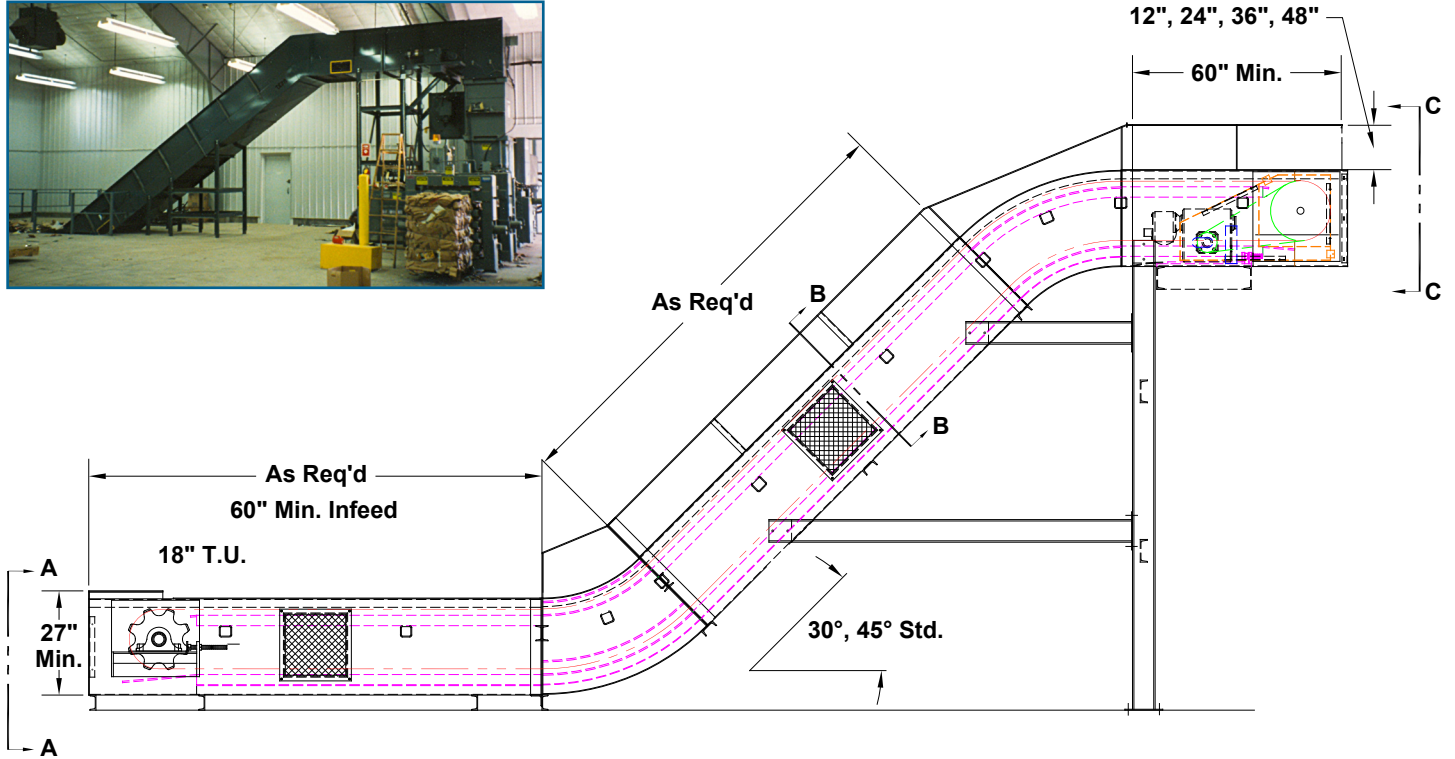
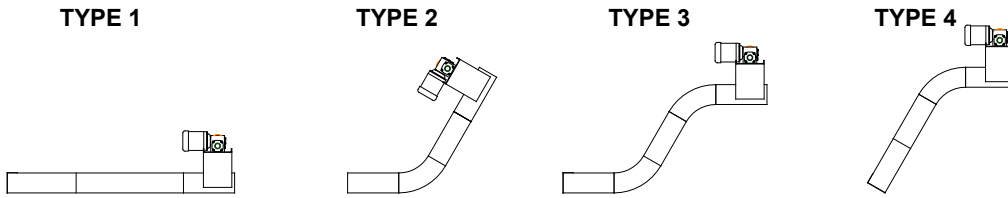
MODEL 661 SPECIFICATIONS

	Standard	Options
Belt Widths	24" to 72"	
Belt Type	6" Pitch Chain Edge PVC, 3" dia. flanged rollers, 3" formed cleats	
Curves	30°, 45°, 60°	
Frame	Formed or Open style with access panels	
Drive	3/4 HP 230/460/3/60	1, 1-1/2, 2, 3, 5, 7-1/2 HP 115/230/1/60, 575/3/60, TEFC, severe duty, inverter duty, brake motor
Drive Sprocket	8 Tooth 12" P.D.	
Optional		
Belt width, drive, drive location, fixed or variable speed, controls, infeed hopper, customized siderails, bolt-on bottom pans, access panels on side frames, open style frame available, chain oilers, supports, paint : Belting - Consult factory		

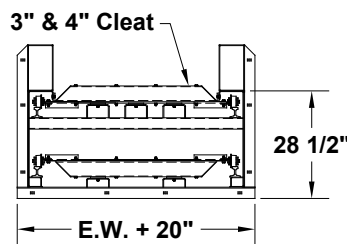
NOTE: Specifications subject to change without notice

MODEL 661

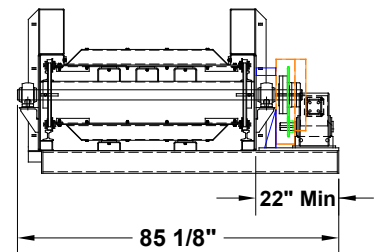
CHAIN EDGE BELT CONVEYOR



Section A-A



Section B-B



Section C-C



735 Industrial Loop Road • New London, WI 54961-9612
 920-982-6600 • Fax 920-982-7750 • Toll Free 800-558-3616
 Website: www.titanconveyors.com • Email: sales@titanconveyors.com

