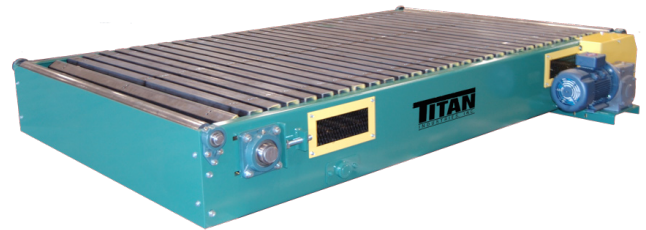


MODEL 696 SLAT CONVEYOR



When your material handling requirements call for a unique solution, the Titan **Model 696 Slat Conveyor** should be considered. Standard construction (a 7 gauge frame) is extremely heavy-duty to exceed the most demanding requirements for industrial usage. Units can be supplied with 4" pitch or 6" pitch heavy-duty slat conveyor chain with attachments every pitch. Slats come in standard formed 7 gauge design, but can also be furnished in other designs such as formed V, heavy flat plate, attachments for lugs or fixtures or even different materials such as wood. The Model 696 comes with overload protection, screw type take-ups and accumulation, assembly, side loading and unloading and frequent stop/start applications.

Titan can modify the standard unit or custom design a unit to meet your requirements.

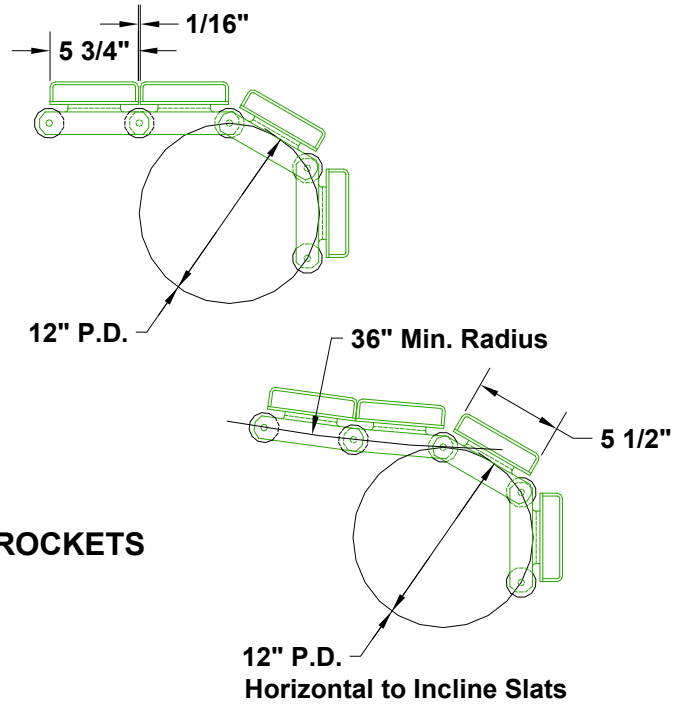
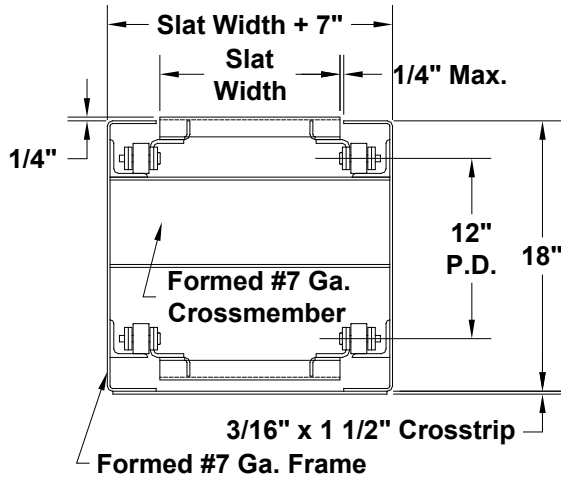
MODEL 696 SLAT CONVEYOR SPECIFICATIONS		
	Standard	Options
Slat Widths	12", 18", 24"	30", 36", 48", 60", 72"
Drive	H.P. to suit application	
Speed	30 f.p.m.	Specify speed required
Slats	Formed 7 ga.	HD steel plate, wood, UHMW covered
Frame	Formed 7 ga.	
Belt	6" pitch (SR196 chain)	4" pitch (SR194 chain)
OPTIONAL		
Drive location, H.P., speed, Slat widths to 72", fixtures mounted on slats, Belt - 4" pitch (SR194), work leaves, push offs, fixtures mounted on slats, special paint		

NOTE: Specifications subject to change without notice

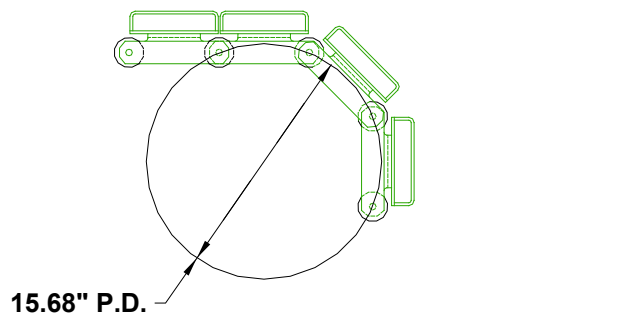
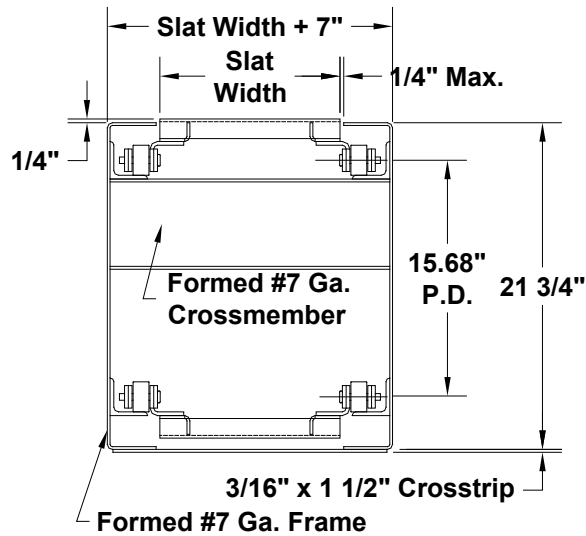
MODEL 696

SLAT CONVEYOR

STANDARD FRAME WITH 12" P.D. SPROCKETS



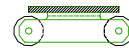
STANDARD FRAME WITH 15.68" P.D. SPROCKETS



1" Thk. Hardwood Slat



3/8" or 1/2" R. Slats



735 Industrial Loop Road • New London, WI 54961-9612
 920-982-6600 • Fax 920-982-7750 • Toll Free 800-558-3616
 Website: www.titanconveyors.com • Email: sales@titanconveyors.com

