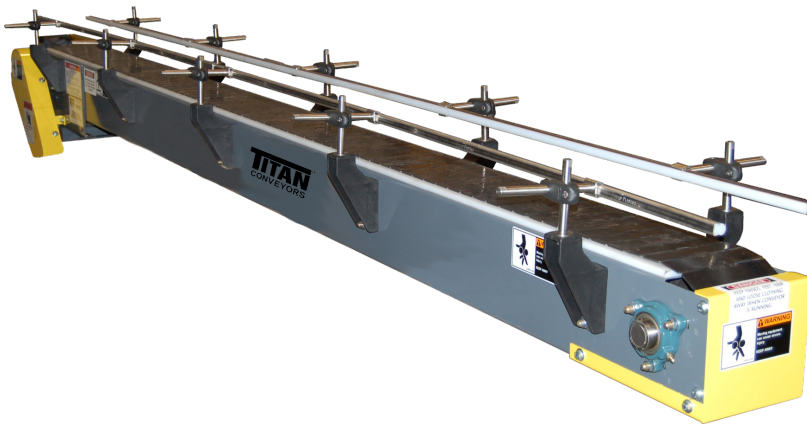


# TABLE TOP CONVEYOR



TITAN **Table Top Conveyors** can serve your transporting, merging, diverting or accumulation problems. Table Top Conveyors can solve a wide range of processing requirements including labeling, production inspection, product filling and weighing. Stainless Steel options are available for direct food contact and clean room handling.

Titan offers a variety of belt widths from 3 1/4" to 12" wide in Delrin thermoplastic, carbon steel, and stainless steel. Bottom mount drive is standard with other drive locations available depending upon your needs.



## MODEL TABLE TOP

### STANDARD

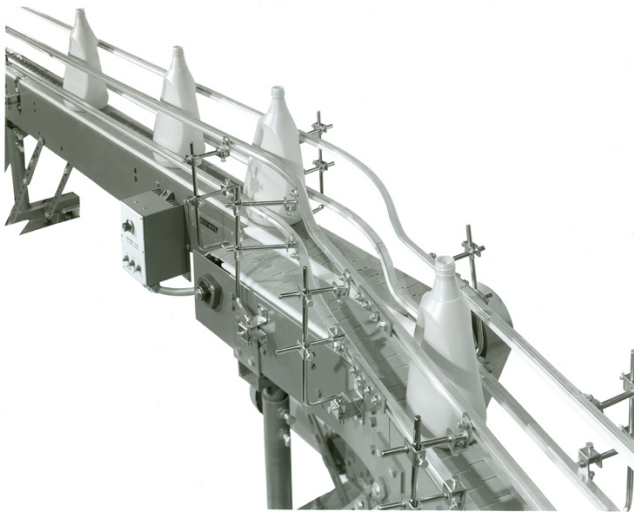
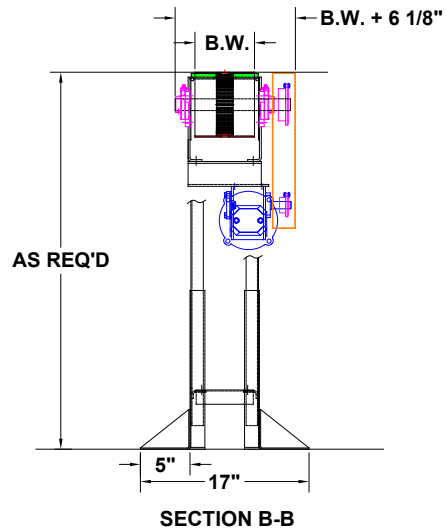
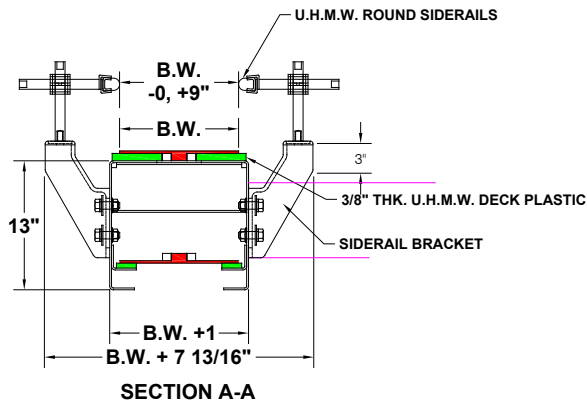
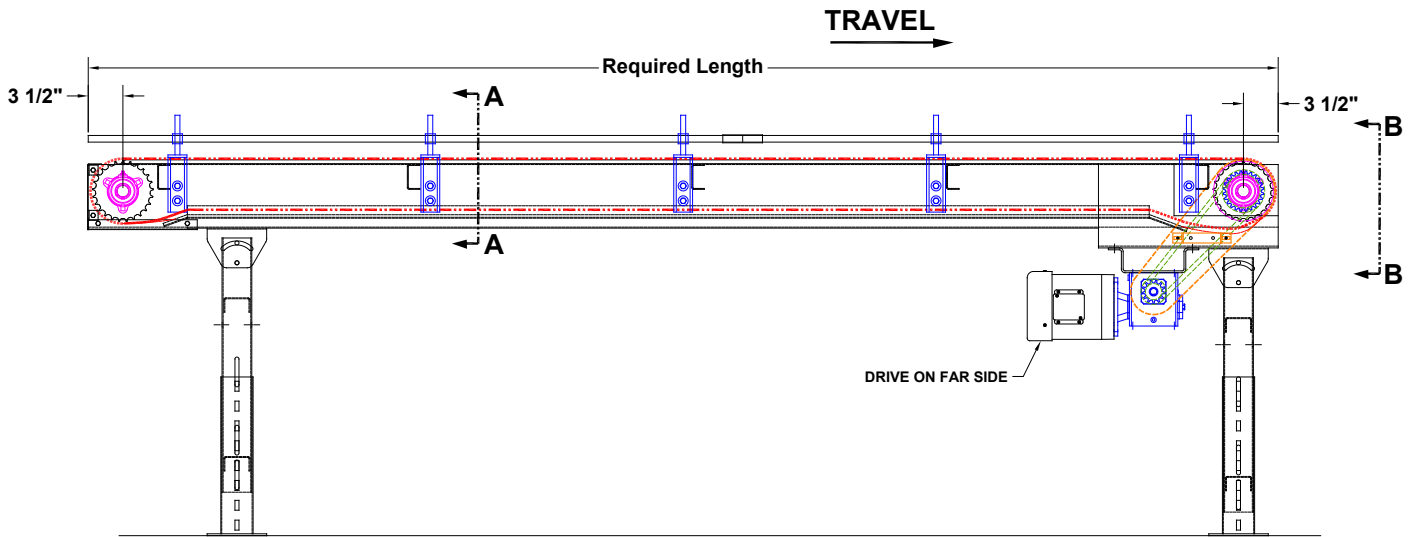
<b>Belt Widths</b>	3 1/4", 4", 4 1/2", 6", 7-1/2"
<b>Belt Type</b>	Plastic, carbon steel or stainless
<b>Lengths</b>	Per application
<b>Curves</b>	Per application
<b>Drive</b>	1/2 H.P. 230/460/3/60
<b>Frame</b>	7" deep formed 12 ga.

### OPTIONS

Stainless construction, Interlox belt, customized siderails, Bottom or side mount drive, Fixed speeds - specify speed required, variable speed with DC motor and SCR controller or AC inverter, Paint choice

**NOTE: Specifications subject to change without notice**

# TABLE TOP CONVEYOR



735 Industrial Loop Road • New London, WI 54961-9612  
 920-982-6600 • Fax 920-982-7750 • Toll Free 800-558-3616  
 Website: [www.titanconveyors.com](http://www.titanconveyors.com) • Email: [sales@titanconveyors.com](mailto:sales@titanconveyors.com)

