

# MODEL MDR

## MOTOR DRIVEN ROLLER CONVEYOR

### POLY V-BELT



Titan Conveyors™ introduces the Motorized Roller Conveyor, a modular conveyor system utilizing a 24 volt DC motorized drive within a roller. Adjacent rollers are slave-driven from it using chains, timing belts, or O-belts. Loads up to 3900# can be moved with these clean and efficient motorized roller systems.

Among many advantages of the Motorized Roller Conveyor are:

- Maintenance free
- Lower operating cost
- Plug & play controls
- Lower power consumption
- Reversible
- No awkward motor & gearbox
- Quieter
- Dynamic braking
- Low profile pop-up transfer
- 24v Safety
- Variable speed

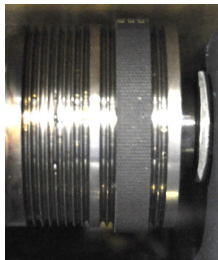


Motorized roller conveyors are perfect for large zone controlled systems in assembly lines or unithandling of pallets and cases.

Titan believes the success of your system lies in understanding the subtle details of your operation. Titan's engineers have the experience and knowledge you require, and they take the time to get it right, providing you with years of dependable operation, increased efficiency, and low maintenance costs.



Motorized Roller Conveyor with 2-Strand Pop-up Chain Transfer



Poly V-Belt

#### Belt or Chain Driven Motorized Roller Conveyor Specifications

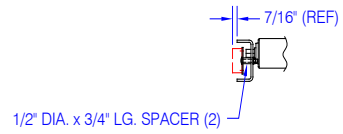
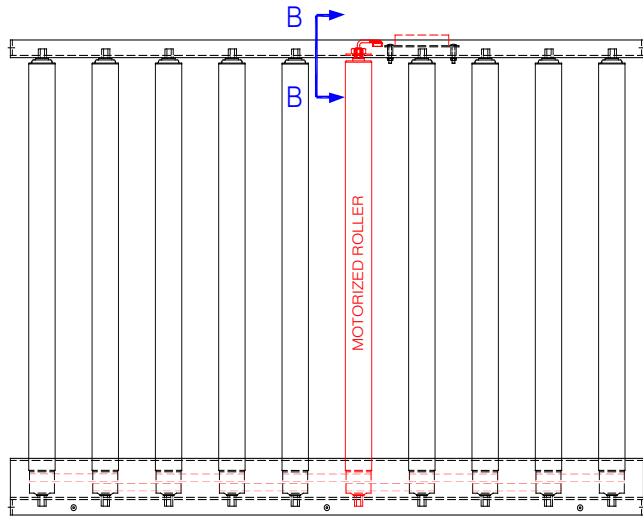
	Model MR (Urethane O-Belt)	Model MR (Chain to Chain & Poly V-Belt) 1.9" dia. roller	Model MR (Chain to Chain & Poly V-Belt) 2-1/2" dia. roller
<b>Effective Widths</b>	13" to 42"	13" to 42"	13" to 72"
<b>Lengths</b>	3' Min.	3' min.	3' min.
<b>Roller Size</b>	1.9" Dia. x 16 ga. with 7/16" hex shaft	1.9" Dia. x 16 ga. with 7/16" hex shaft	2.5" Dia. x 11 ga. with 11/16" hex shaft
<b>Roller Center</b>	2-1/4", 3", 4", or 6"	4", 6", 12"	2-13/16", 3-7/16", 4-3/8", 5", 6", 10"
<b>Frame</b>	Formed 10 ga.	Formed 10 ga.	Formed 7 ga.
<b>Drive</b>	Itoh Denki 24 Volt DC Motor Driven Roller	Itoh Denki 24 Volt DC Motor Driven Roller	Itoh Denki 24 Volt DC Motor Driven Roller
<b>Roll to Roll Drive</b>	Poly O-Belt	Poly V Belt or #40 Chain	Poly V-Belt or #40 or #50 Chain
<b>OPTIONAL</b>			
Roller Centers - Consult Factory, Galvanized or stainless construction, Controls, Coated rollers, Paint, 2 or 3 strand chain transfers, Pallet lifts, End stops, UHMW sleeves, Air operated blade stop, Supports			

**NOTE: Specifications subject to change without notice**

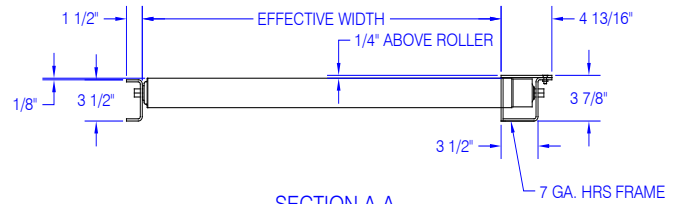
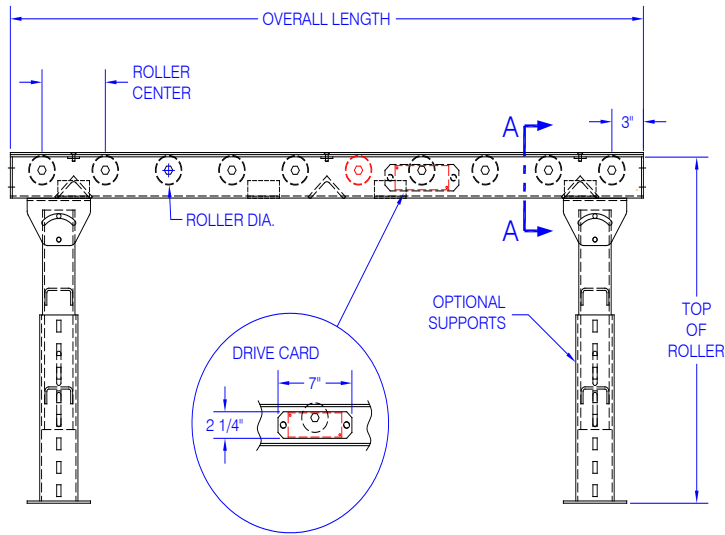
# MODEL MDR

## MOTOR DRIVEN ROLLER CONVEYOR

### MOTOR DRIVEN ROLLER POLY V-BELT DRIVE



SECTION B-B



SECTION A-A



735 Industrial Loop Road • New London, WI 54961-9612  
 920-982-6600 • Fax 920-982-7750 • Toll Free 800-558-3616  
 Website: [www.titanconveyors.com](http://www.titanconveyors.com) • Email: [sales@titanconveyors.com](mailto:sales@titanconveyors.com)