

Company

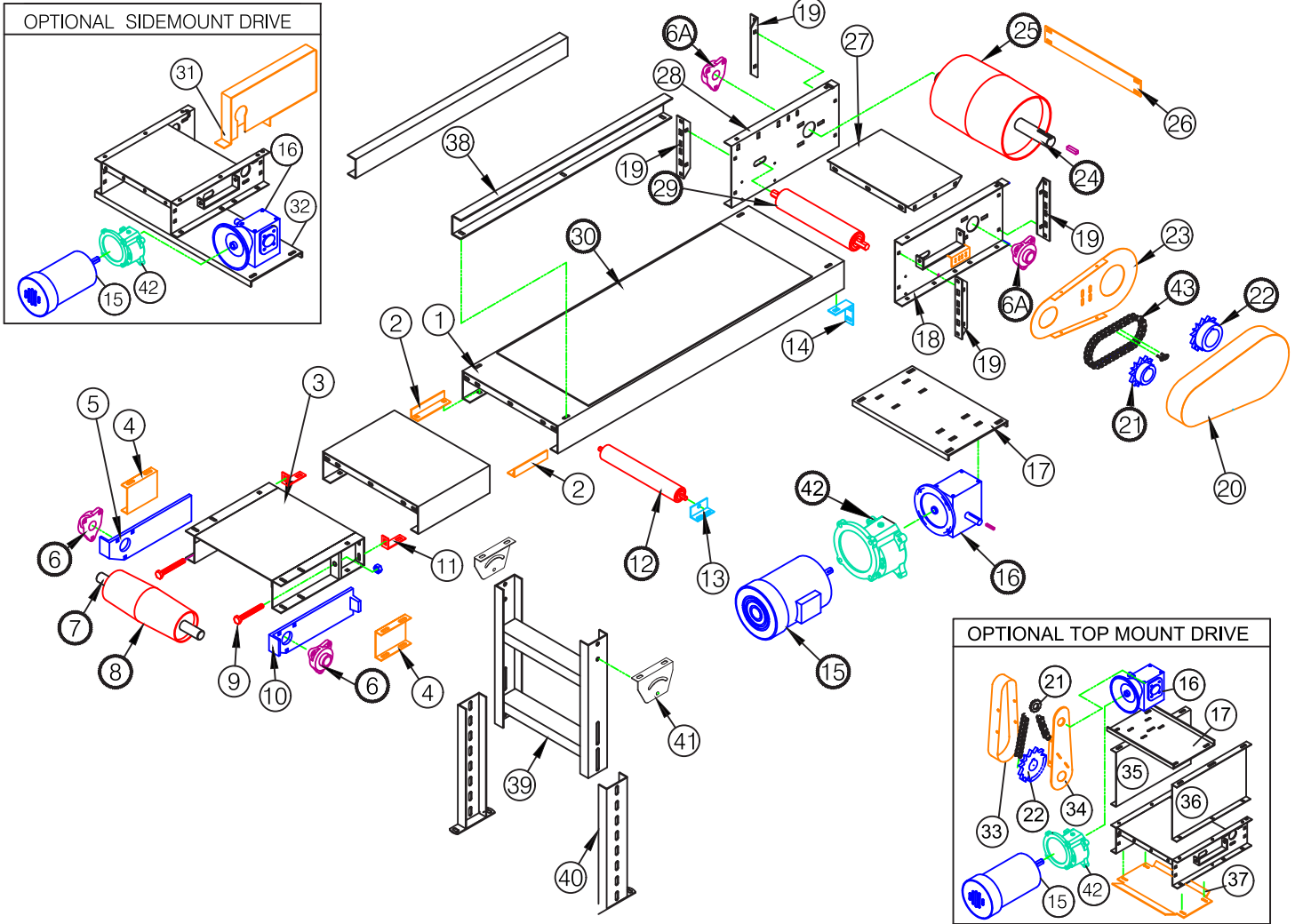
Phone

Contact

Conveyor Serial Number

E-mail

To Request a Quote for Spare Parts - Fill in the Information below & Quantity of each Part & Click on the Email Button



• Recommended spare parts to be stocked at your location

Part Number	Description	Qty.
6.	1 3/16" BEARING, 3 BOLT FLANGE	
6A	1 7/16" BEARING, 3 BOLT FLANGE	
7.	INFEED SHAFT	
8.	INFEED PULLEY	
12.	RETURN ROLLER	
15.	MOTOR	
16.	REDUCER	
21.	DRIVE SPROCKET	
22.	DRIVEN SPROCKET	
24.	DRIVE SHAFT	
25.	DRIVE PULLEY	
29.	SNUB ROLLER	
30.	BELT	
42.	RATIO MULTIPLIER	
43.	ROLLER CHAIN	
Other Parts		
1.	INTERMEDIATE SUPPORT	
2.	SUPPORT SPLICE ANGLE	
3.	INFEED SECTION	
4.	INFEED RETAINER CHANNEL	
5.	CAST TAKE-UP L/H	
9.	ADJUSTMENT BOLT	
10.	CAST TAKE-UP R/H	
11.	HEAD SECTION SPLICE ANGLE	
13.	RETURN ROLLER BRACKET	
14.	DRIVE SECTION SPLICE ANGLE	
17.	MOTOR BASE	
18.	HEADPLATE R/H	
19.	CONNECTING BRACKET	
20.	GUARD FRONT	
23.	GUARD BACK	
26.	DRIVE SPREADER	
27.	DRIVE SECTION DECK	
28.	HEAD PLATE L/H	
31.	SIDEMOUNT DRIVE GUARD	
32.	SIDEMOUNT DRIVE MOTOR BASE	
33.	GUARD FRONT TOP MT. DRIVE	
34.	GUARD BACK TOP MT. DRIVE	
35.	TOP MT. DRIVE HEAD PLATE L/H	
36.	TOP MT. DRIVE HEAD PLATE R/H	
37.	LOWER GUARD TOP MT. DRIVE	
38.	SIDERAIL (OPTIONAL)	
39.	UPPER SUPPORT	
40.	LOWER SUPPORT	
41.	SMILE BRACKET	



Replacement Parts RFQ for Model 108 Center Drive & Take-up Slider Bed Belt Conveyor

Company

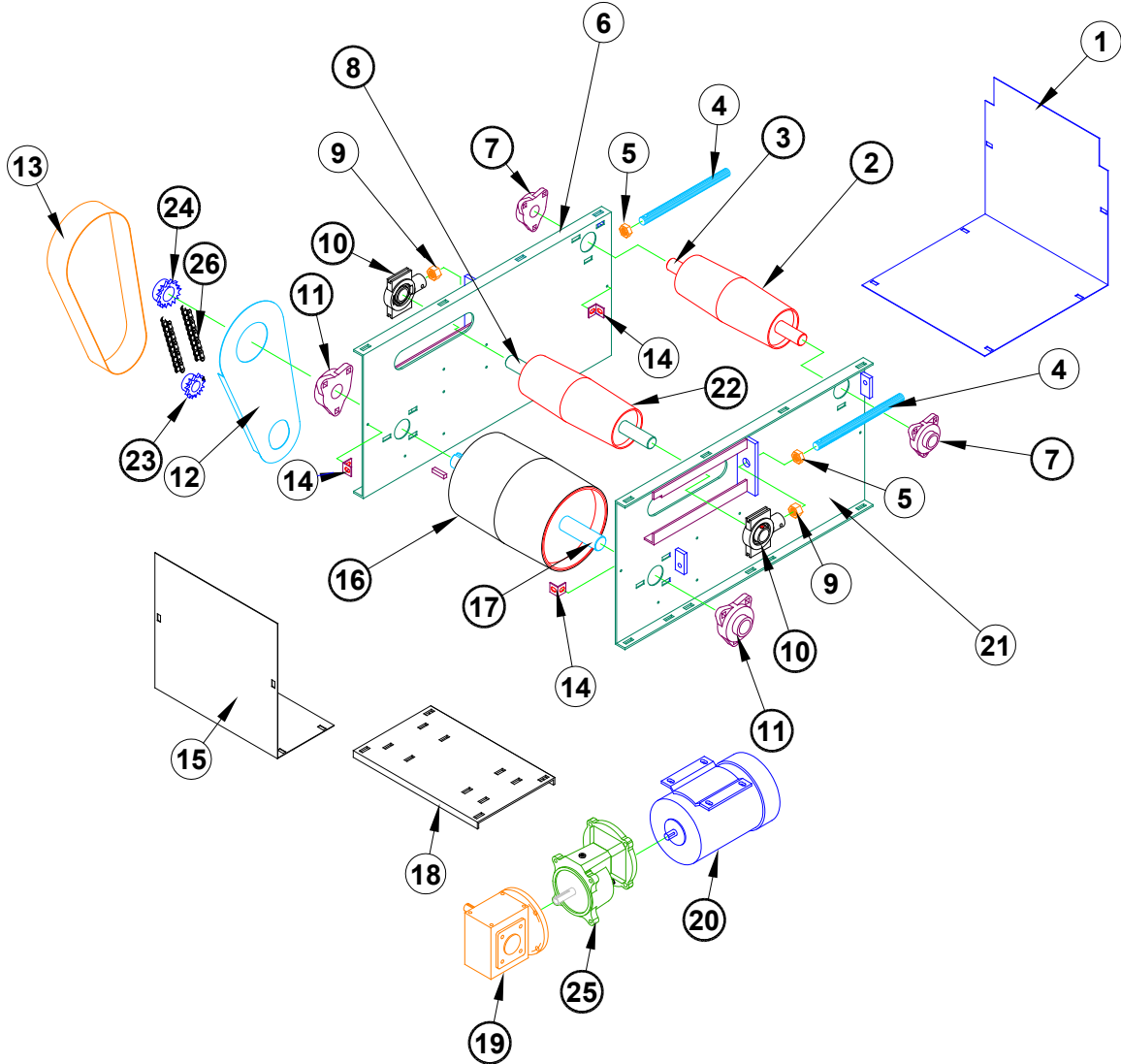
Phone

Contact

Conveyor
Serial Number

E-mail

To Request a Quote for Spare Parts - Fill in the Information below & Quantity of each Part & Click on the Email Button



• Recommended spare parts to be stocked at your location

Part
Number - Description - Qty.

- 2. • SNUB PULLEY
- 3. • SNUB PULLEY SHAFT
- 7. • 1 3/16" 3 BOLT FLANGE BEARING
- 8. • TAKE-UP SHAFT
- 10. • TAKE-UP BEARING
- 11. • 1 7/16" 3 BOLT FLANGE BEARING
- 16. • DRIVE PULLEY
- 17. • DRIVE SHAFT
- 19. • REDUCER
- 20. • MOTOR
- 22. • TAKE-UP PULLEY
- 23. • DRIVE SPROCKET
- 24. • DRIVEN SPROCKET
- 25. • RATIO MULTIPLIER
- 26. • ROLLER CHAIN

Other Parts

- 1. LARGE GUARD C.D. & T.U.
- 4. THREADED ROD
- 5. HEX JAM NUT
- 6. C.D. & T.U. PLATE L/H
- 9. HEX NUT
- 12. GUARD BACK
- 13. GUARD FRONT
- 14. L-CLIP
- 15. SMALL GUARD C.D.& T.U.
- 18. MOTOR BASE
- 21. C.D. & T.U. PLATE R/H