

MODEL 204

FLOOR TO FLOOR SLIDER BED



Titan's **Model 204 Floor to Floor slider bed** adds flexibility to your manufacturing process by allowing you to utilize valuable floor space more effectively. The double nose over with bend rollers allows a smooth transition of the product from incline to horizontal thus protecting fragile products. The Model 204 uses a 4" diameter crown faced rubber lagged drive pulley with a rugged 4" deep formed 12 gauge box style frame. Adjustable "H" type supports or ceiling hanger brackets are furnished as standard equipment. A center drive and take-up can be added for reversing applications. The design of all Titan conveyors allows you to add components easily to achieve a completely integrated material handling system.

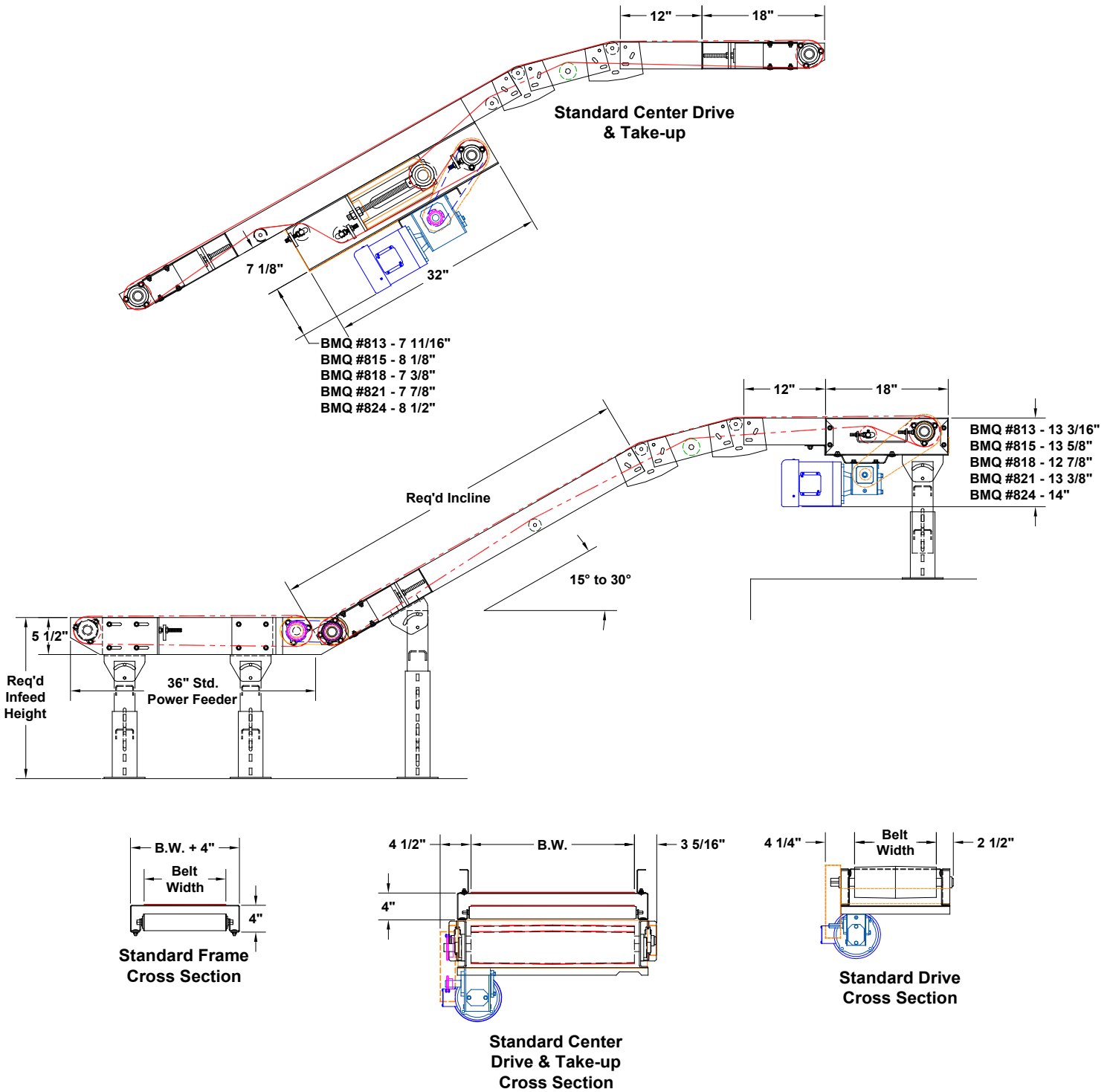


MODEL 204 FLOOR TO FLOOR SLIDER BED CONVEYOR		
	Standard	Options
Belt Widths	12", 14", 16", 18", 20", 24", 30", 36"	4", 6", 8", 10"
Lengths	5' min. to 40' max.	3' min to 50' max
Belt Type	Rubber rough top	Gum rubber
Drive	1/2 HP 230/460/3/60	3/4, 1, HP, 115/230/1/60, TEFC, wahsdown, severe duty, inverter duty, brake motor
Drive Pulley	4" dia. crowned, rubber lagged	
Frame	4" deep formed 12 ga.	
Optional		
H.P., drive location, speed, fixed or variable speed, controls, power feeder, belt type, center drive & take-up, transfer rollers, bolt-on end stop, belt scrapper, galvanized, stainless, siderails, supports, casters, other belt types, siderail skirting, special paint		
Many other options available, consult factory representative		

NOTE: Specifications subject to change without notice

MODEL 204

FLOOR TO FLOOR SLIDER BED



735 Industrial Loop Road • New London, WI 54961-9612
 920-982-6600 • Fax 920-982-7750 • Toll Free 800-558-3616
 Website: www.titanconveyors.com • Email: sales@titanconveyors.com

