

# MODEL 304

## CLEATED BELT CONVEYOR



The rugged **Model 304 Titan Parts Conveyor** is designed to handle various types of products. The Model 304 allows you to convey and elevate product from one machine to another. The Model 304 is offered in seven belt widths with standard units up to twelve feet long. The standard frame design incorporates 3 1/2" high siderails and an enclosed bottom pan for the belt return. Options such as infeed hopper, adjustable fixed supports add to the flexibility of this unit. The optional adjustable undercarriage features eight inch diameter steel wheels for easy handling over rough surfaces.

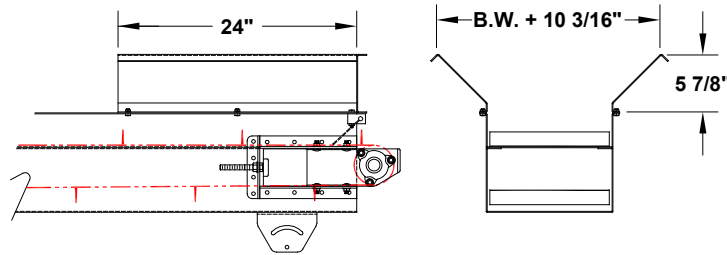
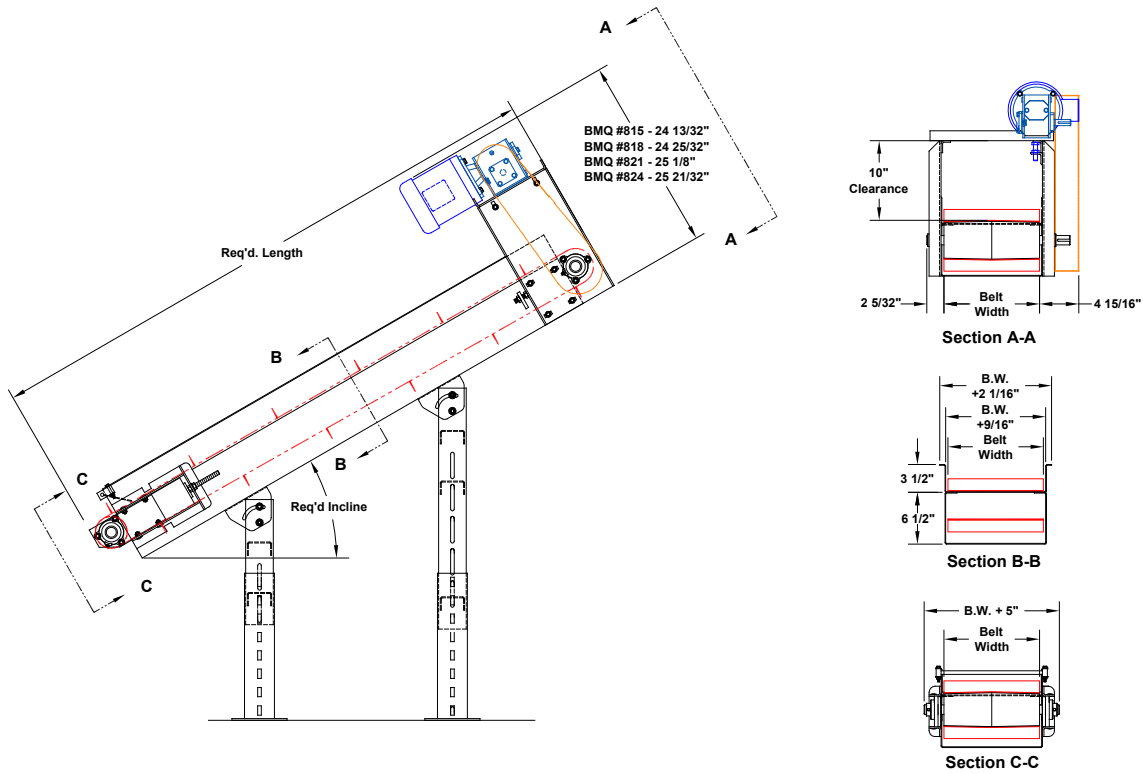


MODEL304 SPECIFICATIONS		
	Standard	Optional
<b>Belt Widths</b>	4", 6", 8", 12", 18", 24", 30", 36"	10", 14", 16"
<b>Lengths</b>	5' to 12'	3' min. to 20'
<b>Belt Type</b>	PVC 120 with Vulcanized 1-1/2" cleats on 12" centers	Food grade, plastic belt, cleat centers & heights to suit
<b>Drive</b>	1/2 H.P. 230/460/3/60	3/4, 1, 1-1/2, HP, 115/230/1/60, TEFC, washdown, severe duty, inverter duty, brake motor
<b>Drive Pulley</b>	4" dia. crowned rubber lagged	
<b>Frame</b>	6-1/2" deep formed 12 g.a.	
<b>Side Rail</b>	3 1/2" high formed vertical	
<b>OPTIONAL</b>		
Speed, variable speed, belt widths, belt type, side mount/bottom mount drive, controls, hopper, discharge chute, siderails, galvanized, stainless, supports, adjustable undercarriage, casters, special paint		

**NOTE: Specifications subject to change without notice**

# MODEL 304

## CLEATED BELT CONVEYOR



Optional Infeed Hopper

Optional Undercarriage Configuration Chart

	45°		24°-29°		Horizontal	16° Decline	
	Max. Dr. W/Min. In.	Minimum Infeed	Minimum Drive	Minimum Infeed	Max. Dr. W/Min. In.	Minimum Discharge	Maximum Infeed
4 Ft.	35 3/4"	5 1/4"	28" (29°)	7 1/4"	34 3/4" 35"	25 1/4"	36 3/4"
6 Ft.	52 1/2"	5 1/4"	39 1/4" (29°)	6 3/4"	46 3/4" 46 3/4"	31 1/2"	49 1/2"
8 Ft.	69 1/2"	5 1/4"	49 1/4" (28°)	6 1/2"	60 1/4" 60 1/4"	38"	63 3/4"
10 Ft.	86 1/2"	5 1/4"	56 1/2" (24°)	9"	77 1/4" 77 1/4"	-	-
12 Ft.	103 1/2"	5 1/4"	66 1/4" (24°)	9"	77 1/4" 77 1/4"	-	-



Conveyor pictured with optional undercarriage



735 Industrial Loop Road • New London, WI 54961-9612  
 920-982-6600 • Fax 920-982-7750 • Toll Free 800-558-3616  
 Website: [www.titanconveyors.com](http://www.titanconveyors.com) • Email: [sales@titanconveyors.com](mailto:sales@titanconveyors.com)

