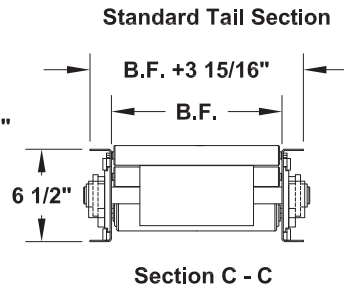
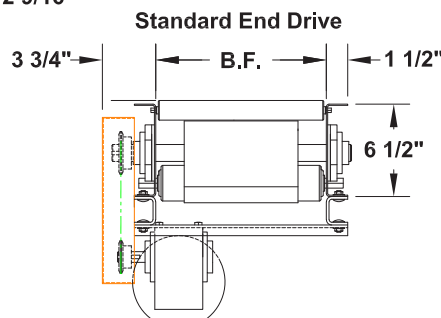
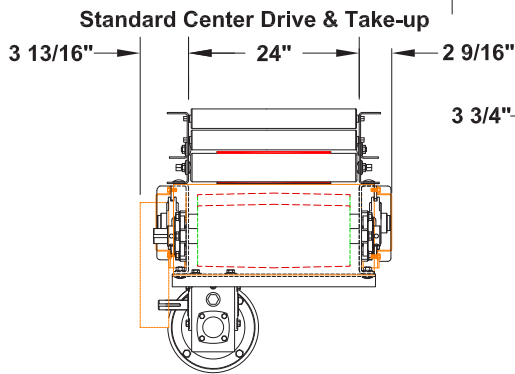
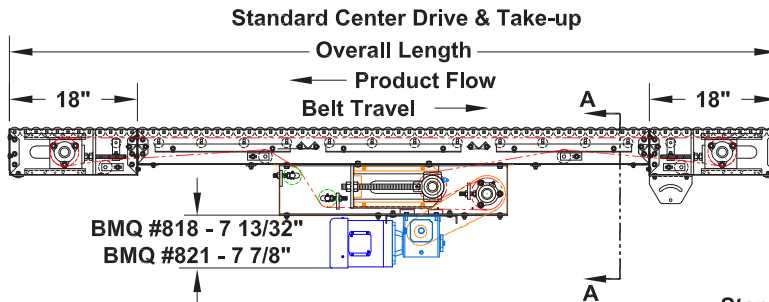
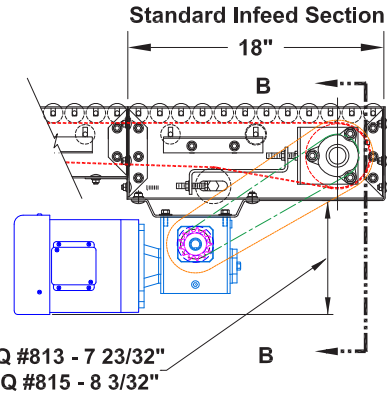
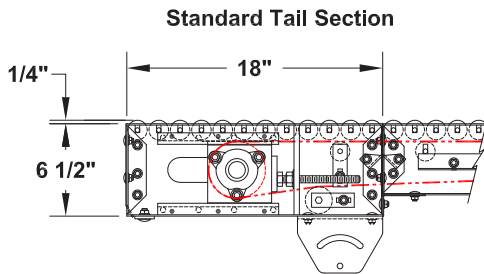
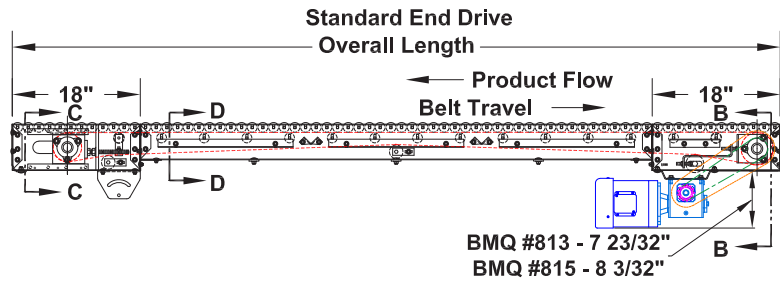
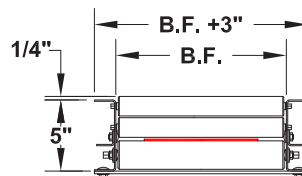


# MODEL 402

## BELT-DRIVEN LIVE ROLLER

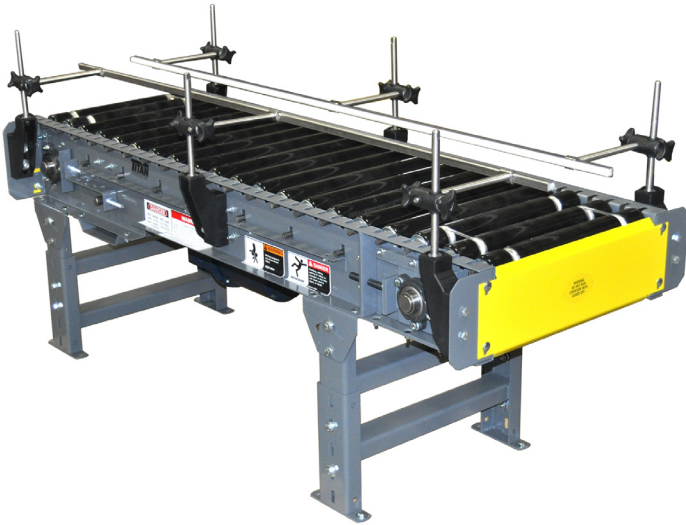


Standard Intermediate Frame



# MODEL 402

## BELT-DRIVEN LIVE ROLLER CONVEYOR



When your situation calls for light-duty conveying of small packages or close roller centers, the TITAN Model 402 Belt Driven Live Roller Conveyor should be specified. Ideally suited for packages as small as 5" long the 1-3/8" diameter rollers can be supplied on 1-1/2" centers. The standard 1-3/8" diameter rollers are 18 gauge with a 5/16" hex spring loaded shaft and grease packed bearings. The drive pulley is a 4" diameter crown face rubber lagged with 1-3/16" bore. Even though the rollers are considered light-duty, the rugged 12 gauge frame will withstand most industrial applications. Call your TITAN distributor for more details.



MODEL 402 BELT DRIVEN LIVE ROLLER CONVEYOR SPECIFICATIONS		
	Standard	Options
<b>BF Dimensions</b>	10", 13", 16", 19", 22"	25", 28"
<b>Lengths</b>	3' Min. to 50' Max.	
<b>Roller Size</b>	1 3/8" dia. x 18 ga. with 5/16" hex axle	1.9" x 16 ga. with 7/16" hex axle
<b>Roller Centers</b>	3"	1-1/2", 3", 4 1/2", 6"
<b>Belt Type</b>	PVC 120	Others available
<b>Frame</b>	6 1/2" deep formed 12 ga.	6 1/2" deep formed 12 ga.
<b>Drive</b>	1/2 H.P. 230/460/3/60	3/4, 1, 1-1/2, 2 HP , TEFC, severe duty, inverter duty, brake motor
<b>Drive Pulley</b>	4" dia. crown faced rubber lagged	
<b>OPTIONAL</b>		
Belt Type, Drives - Fixed speeds-specify speed req., variable speed with DC motor and SCR controller or AC inverter, Motor , Controls, Internal take-up, Center drive, 1", 3 1/2", 6", 8". 12" side rails available, Adjustable side rails, Casters - 4' or 6" rigid, Side mount drive, Knee braces/ceiling hangers, Bolt on bottom pans, Rollers centers, Transfer roller, End stop, Accumulation, Galvanized or Stainless steel construction		

**NOTE: Specifications subject to change without notice**