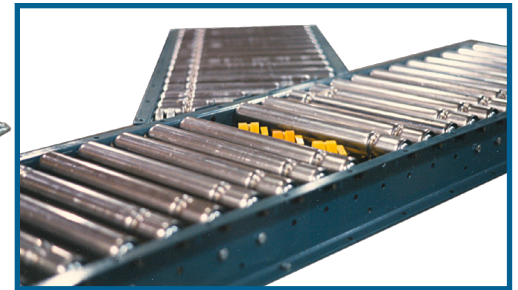


## LINE SHAFT INDIVIDUAL BELT DRIVEN ROLLER CONVEYOR

With Pathway's "quick couple" drive system, you can easily reconfigure your line or lines when you wish to expand or change your plant layout.

Pathway™ products can be logically and economically used for simple transportation of products or for integration into total computer directed systems.

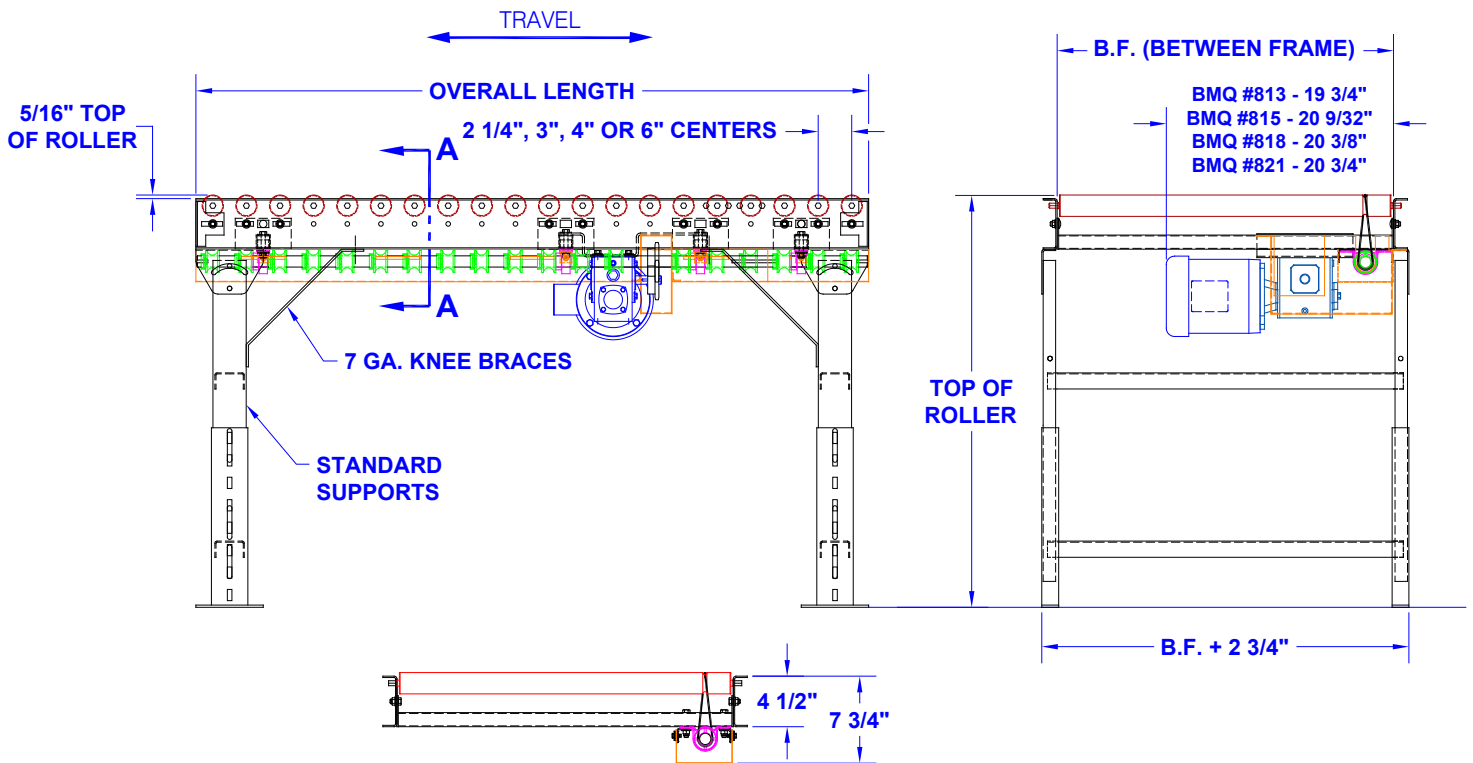
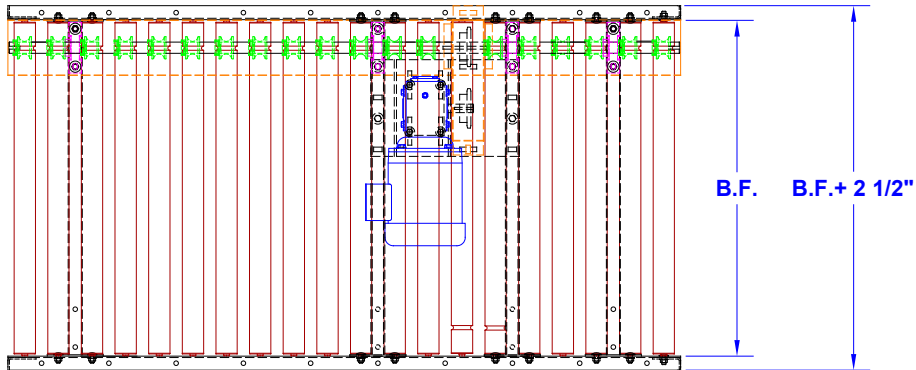
With Titan's Pathway™ Line Shaft Conveyors and wide variety of accessories you can perform a host of functions including: lift, turn, rollover, transfer, upend, speed up, slow down, brake and accumulate



LINE SHAFT		
	Standard	Options
<b>Between Frames</b>	13", 16", 22", 28", 34", 40"	Specify
<b>Lengths</b>	2' Minimum, 200' Maximum (straight)	Based on accessories chosen
<b>Drive</b>	1/2 H.P. 230/460/3/60	3/4, 1, 1-1/2, 2 H.P. 115/230/1/60, 575/3/60TEFC, severe duty, inverter duty, brake motor
<b>Speed</b>	60 FPM - 30 FPM minimum	Fixed Speeds - specify, Variable speed with DC motor & SCR controller or AC inverter
<b>Rollers</b>	1.9 Dia. x 16 ga. with 7/16" hex shaft	Centers 2-1/4", 3", 4", 6"
<b>Controls</b>	None supplied	Specify type required
<b>Optional</b>		
Curves, spurs, merges, power crossovers, 900 urethane belt transfers, wheel divert sections, speed up spools, pop-ups stops, (manual & air operated), accumulation zones, brake zones, turn wheels, traffic cop, fixed stops, timing belt drives, Siderails - 1', 3-1/2", 6" high fixed channel, 3-1/2" high adjustable, casters - 4" or 6" dia. rigid or swivel with brake		
Many other options available, consult factory representative		

**NOTE: Specifications subject to change without notice**

## LINE SHAFT INDIVIDUAL BELT DRIVEN ROLLER CONVEYOR



SECTION A-A

