

# **TITAN**<sup>TM</sup> **CONVEYORS**

**Industrial Conveyor Specialists**



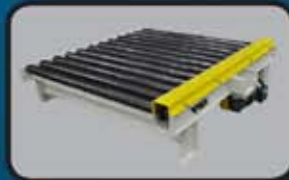
**Custom Conveyors  
& Systems**



**Belt  
Conveyors**



**Steel Belt  
Conveyors**



**Roller  
Conveyors**



**Specialty Conveyors**



**Accessories**

[www.titanconveyors.com](http://www.titanconveyors.com)

# **TITAN**<sup>TM</sup> **CONVEYORS**



Your conveying needs are unique and challenging. Your project time line requires a conveyor partner you can trust. At Titan our mission is to meet your needs with equipment built to last. We want the experience of working with us to be like no other in the industry.

- We work with you to carefully choose the right conveyor and accessories.
- All our conveyors and systems are drawn for your approval in AutoCAD<sup>TM</sup> or Solid Works<sup>TM</sup>, so you can be certain they are what you expect.
- Through design we have eliminated issues found in competitive products.
- Components are chosen for reliability and longevity.
- We deliver on time and we will stay with you until it's right.

**[www.titanconveyors.com](http://www.titanconveyors.com)**

Product Literature • Photos • Specifications  
Maintenance Manuals • Engineering Drawings  
Replacement Parts • Accessories • Applications • Catalogs  
Order Forms • Quick Questions • Instructional Videos



Titan Conveyors  
735 Industrial Loop Road  
New London, WI 54961-2600  
800-558-3616 • 920-982-6600  
Email: [sales@titanconveyors.com](mailto:sales@titanconveyors.com)  
[www.titanconveyors.com](http://www.titanconveyors.com)

# Table of Contents

<b>Custom Conveyors and Systems</b> .....	2
<b>Belt Conveyors</b>	
Slider Bed Conveyors .....	4
Incline Conveyors .....	4
Roller Bed Conveyors .....	5
Slider Bed Trough Conveyors .....	5
Bulk Handling Conveyors .....	6
Sidewall Bulk Handling Conveyors .....	6
Cleated Belt Conveyors .....	7
Parts Conveyor .....	8
Chain Edge Belt Conveyor .....	8
Pallet Pro Conveyor .....	9
Table Top Conveyor .....	9
<b>Steel Belt Conveyors</b>	
Hinged Steel Belt Conveyors, 2-1/2" Pitch .....	10
Hinged Steel Belt Conveyors, 4" & 6" Pitch .....	11
Replacement Hinged Steel Belts .....	12
Quench Conveyor .....	13
Drag Chain Conveyor .....	13
"Pro-Feed" Parts Conveyor .....	13
Wire Mesh Belt Conveyors .....	14
Cooling-Drying Conveyor .....	15
Slat Conveyor .....	15
<b>Roller Conveyors</b>	
Chain Driven Live Roller Conveyors .....	16
Chain Driven Live Roller Curve Conveyor .....	17
Zero Pressure Accumulator .....	17
Motorized Driven Roller Conveyors (MDR) .....	18
Pop-Up Transfers & Stops .....	19
Pallet Destacker-Dispenser .....	19
Belt Driven Live Roller Conveyors .....	20
Belt Driven Live Roller Curve Conveyor .....	20
Line Shaft Conveyors .....	21
Gravity Conveyors .....	22
Ball Transfer .....	22
<b>Specialty Conveyors</b>	
Multi Strand Chain Conveyor .....	23
Turntables .....	23
<b>Accessories</b> .....	24
<b>Warranty</b> .....	Back Cover

# Titan Custom Conveyors & Industrial Conveyor Systems

Since 1981 Titan Sales and Engineering have been working with industry to solve manufacturing, assembly, packaging and material handling problems. Our custom designed conveyors and conveyor systems have helped our customers get lean, cut time and get products to our customers in a more efficient manner.

We have experience and expertise in all of the most challenging applications and industries. At Titan we welcome the question "Do you think you could build a conveyor system like this?"

Titan has designed and built conveyor systems and specialty conveyors for a variety of manufacturers.

Titan conveyors are sold throughout our network of Distributors, System Integrators, and OEM 's in the United States, Canada, and Mexico. Titan also ships internationally.

## Typical Applications

Over the past two decades, we've engineered and built conveyors for such applications as:

- Recycling systems and recycling conveyors
- Moving golf balls from a six-lane-wide conveyor belt to packaging machinery
- Seat, tire and wheel handling for automotive assembly lines
- Food handling of candy, mints, jelly beans, chocolate and lettuce
- Handling of 2,000 degree red-hot forgings and 600 degree parts from casting operations
- Chain roller conveyors for handling such materials as gunpowder, waste water sludge and foundry sand
- Packaging conveyors to handle totes in warehouse and distribution systems
- Appliance assembly line conveyors featuring motorized roller conveyors
- Metal recycling industry
- Glass cullet conveyors
- Assembly line conveyor system for stern drive marine engines
- Conveyors for Water Treatment Industry



Stern Drive Marine Engine Assembly



Appliance Assembly



Paper & Corrugated Baling



Custom Package Handling System



Overhead Conveyor Handling System

# Titan Custom Conveyors & Systems



# Belt Conveyors

## Slider Bed Conveyors

Titan Slider Bed models feature rugged industrial design with grease sealed bearings and screw take-ups. Our **Model 102**, a low profile scrap and parts removal from die press, has a knurled drive for positive pull. **Titan 104 & 108** models feature square head and tail sections for system assembly that are easily integrated to other types of conveyors.

The **Model 110 & 111** are **V-Guide Slider Bed Conveyors**. The Model 110 features a 4 1/2" drive pulley and the Model 111 used an 8 1/2" drive pulley.

V-Guide Conveyors are applicable in the following conditions:

- Short, wide belts and long, narrow belts
- Where pulley flanges cannot be used or may interfere with products being conveyed
- Side loading or unloading applications
- Where the belt runs on its edge in a vertical position instead of lying flat on a conveyor surface
- When reversing applications are required



SLIDER BED CONVEYORS SPECIFICATIONS			
	MODEL 102	MODEL 104	MODEL 108
	Standard	Standard	Standard
Belt Widths	2" to 30"	4" to 48"	6" to 72"
Lengths	2' to 10'	5' to 40'	5' to 150'
Belt Type	PVA 60 MP NLB "Checkout"	PVC 120 Black	PVC 120 Black
Drive	1/4 HP 115/1/60 Gearmotor	1/2 HP 230/460/3/60	1/2 HP 230/460/3/60
Drive Pulley	2" dia. crowned, knurled	4" dia. crowned, rubber lagged	8" dia. crowned, rubber lagged
Frame	1-1/2" deep formed 12 ga.	4" deep formed 12 ga.	4" deep formed 12 ga.
OPTIONS			
	H.P., drive location, speed, fixed or variable speed, belt type, siderails, supports, casters, side take-up, special paint	H.P., drive location, speed; fixed or variable speed, controls, belt type, center drive & take-up, galvanized, stainless, siderails, supports, casters, other belt types, siderail skirting, special paint	
Many other options available, consult factory representative			

## Floor to Floor Slider Bed Conveyors

**Models 204 and 208** Conveyors take loads between floors or to storage areas. Designed to make a smooth transition at the top with bend rollers and discharge roll over. Adjustable supports and modular design make systems assembly a breeze. Options mirror those of the 104 and 108.

FLOOR TO FLOOR SLIDER BED CONVEYORS		
	MODEL 204	MODEL 208
	Standard	Standard
Belt Widths	12" to 36"	12" to 48"
Other Specs	See Model 104 above	See Model 108 above
OPTIONS		
H.P., drive location, speed, fixed or variable speed, controls, power feeder, belt type, center drive & take-up, galvanized, stainless, siderails, supports, casters, other belt types, siderail skirting, special paint		



## Roller Bed Belt Conveyors

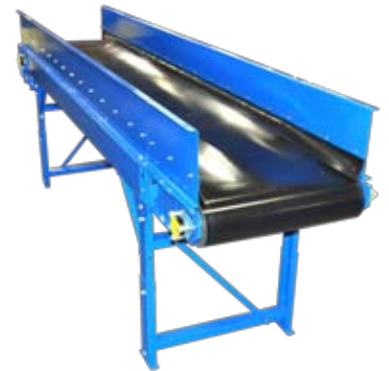
**Models 105 and 109** Roller Bed Belt Conveyor are designed for transporting heavy loads over long distances with less horsepower than slider bed conveyors.



ROLLER BED CONVEYORS		
	MODEL 105	MODEL 109
	Standard	Standard
Belt Widths	8" to 42"	8" to 72"
Lengths	5' min. to 100' max.	5' min. to 100' max.
Belt Type	PVC 120 Black	PVC 120 Black
Drive	1/2 HP 230/460/3/60	1/2 HP 230/460/3/60
Drive Pulley	4" dia. crowned rubber lagged	8" dia. crowned rubber lagged
Frame	5" deep formed 12 ga.	6" deep formed 12 ga.
Roller Size	1.9 dia. x 16 ga.	2.5 dia. x 11 ga.
Rollers Center	6" centers	6" centers
OPTIONS		
Belt widths from 4" to 48", lengths, roller spacing, roller size, other belt types; rough top, food grade, H.P., center drive & take-up, drive location, speeds, variable speed drives, controls, siderails, supports, casters, special paint		
Many other options available, consult factory representative		

## Slider Bed Trough Conveyors

**Model 114 & 118** Slider Bed Trough Conveyors are designed for light and medium duty bulk handling.



SLIDER BED TROUGH CONVEYORS		
	MODEL 114	MODEL 118
Belt Widths	4" to 48"	6" to 72"
Lengths	5' min. to 40' max.	5' min. to 40' max.
Belt Type	PVC 120 Black	PVC 120 Black
Drive	1/2 H.P. 230/460/3/60	1/2 H.P. 230/460/3/60
Drive Pulley	4" dia. crowned rubber lagged - 4" tail pulley	8" dia. crowned rubber lagged - 4" tail pulley
Frame	4" deep formed 12 g.a.	4" deep formed 12 g.a.
OPTIONS		
H.P., drive location, speed, fixed or variable speed, controls, belt widths, belt type, center drive & take-up, galvanized, stainless, siderails, supports, casters, other belt types, siderail skirting, special paint		
Many other options available, consult factory representative		

www.titanconveyors.com  
email • sales@titanconveyors.com

**TITAN**  
CONVEYORS™

# Belt Conveyors - Bulk Handling

## Model 460 Roll Trough Bulk Handling

**Model 460** Bulk Handling is specifically designed to handle large volumes of heavy, abrasive and granular products at a very reasonable cost. Rugged construction and certified components provide for long runs and outdoor applications.



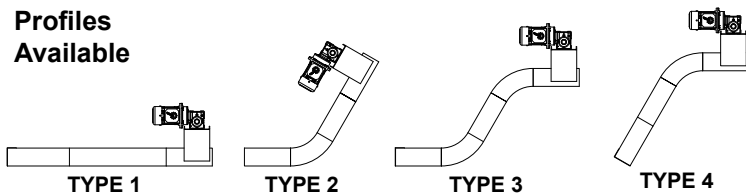
MODEL 460 - 3 ROLL TROUGH BULK HANDLING	
STANDARD	
Belt Widths	Sized by application
Lengths	Per application
Belt	Per application
Drive	1 H.P. 230/460
Drive Pulley	14" dia. crown face rubber lagged drive
Frame	6" structural channel
Pulleys	14" tail pulley
Idler Rollers	2 or 3 roll CEMA
OPTIONS	
2-roll available, Drive as needed, Belt Width - consult factory, Idlers 35 & 45 degree available, consult factory on take-ups and maximum lengths, Speed, Variable speed available, H.P., Controls, Paint, Supports, Drive location	

## Sidewall Conveyor

**Model 340** Sidewall Conveyors are designed to move bulk product up inclines with full containment.

SIDEWALL CONVEYORS SPECIFICATIONS	
STANDARD	
Belt Width	Selected to suit application
Length	Determined by application
Belt Type	Selected to suit application
Drive	Sized to suit application
Curves	30°, 45°, 60° curves available
Frame	Formed 12 gauge
OPTIONS	
Stainless steel construction, Food grade belting, Curves - consult factory	

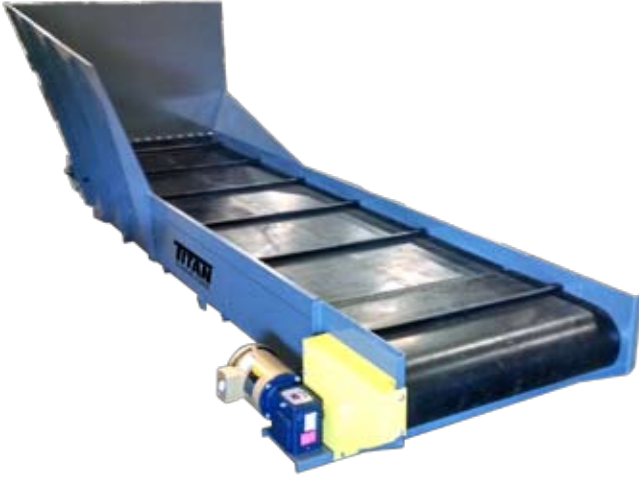
### Profiles Available





## Cleated Belt Conveyor

**Model 304 & 308** Cleated Belt conveyors are ideal for moving small parts from one location to another or custom designed for large bulk handling in recycling facilities. Available with adjustable undercarriage.



Cleated Belt Conveyor Specifications		
	Model 304	Model 308
Belt Widths	4", 6", 8", 12", 18", 24", 36"	12", 18", 24", 30", 36", 48", 60", 72"
Lengths	5' to 12'	Specify
Drive	1/2 H.P. 230/460/3/60	1/2 H.P. 230/460/3/60
Drive Pulley	4" dia. crowned rubber lagged	8" dia. crowned rubber lagged
Frame	6-1/2" deep, formed 12 g.a.	11-1/2" deep, formed 12 ga.
Siderails	3-1/2" high, fixed	3-1/2" high, fixed
<b>OPTIONS</b>		
Speed, variable speed, belt widths, belt type, side mount/bottom mount drive, controls, hopper, discharge chute, siderails, galvanized, stainless, supports, adjustable undercarriage, casters, special paint		

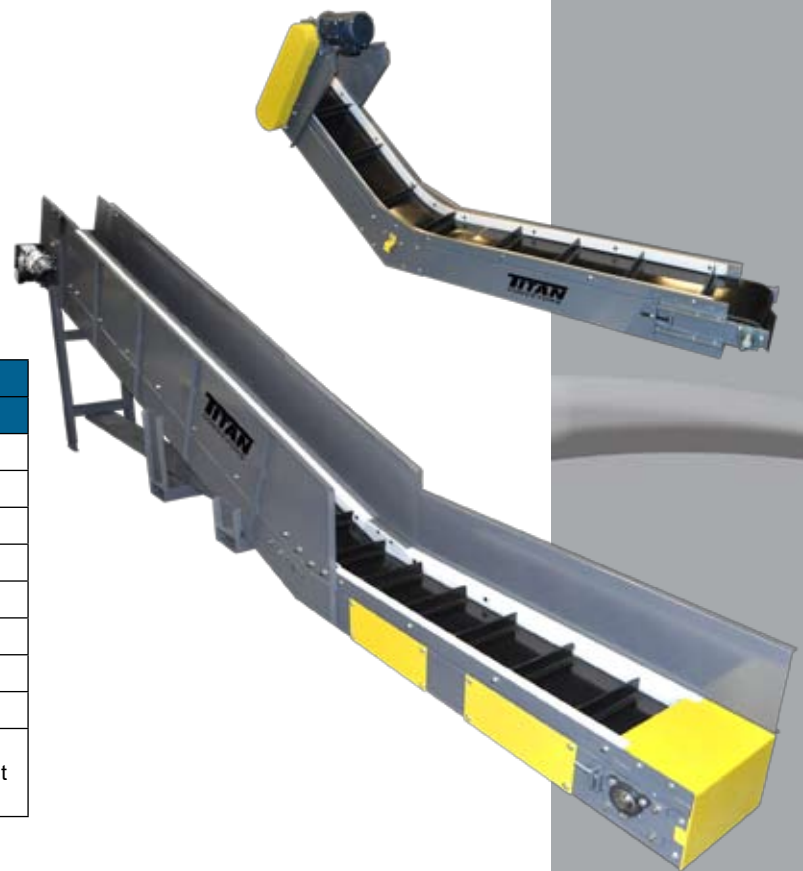


# Belt Conveyors

## Parts Conveyor

**Model 310** Parts Conveyor is designed for lightweight parts. It goes from horizontal to incline with no transfer.

MODEL 310 SPECIFICATIONS	
STANDARD	
Belt Widths	4", 6", 8", 12", 18", 24"
Lengths	24" infeed, 36" incline (others available)
Curves	30°, 45°
Belt Type	Black PVC 120 with 1 1/2" high cleat on 12" centers
Drive	1/2 H.P. 230/460/3/60
Drive Pulley	4" diameter crown faced rubber lagged
Frame	6 1/2" deep formed 12 ga.
OPTIONS	
Drive location, speed, variable speed, controls, lengths, belt type, hopper, discharge chute, siderails, supports, casters, special paint, cleats - Consult Factory	



## Chain Edge Belt Conveyor

**Model 661** is ideally suited for corrugated, paper handling, solid waste and feeding pulpers

MODEL 661 SPECIFICATIONS	
STANDARD	
Belt Widths	12", 18", 24", 30", 36", 48", 60", 72"
Belt Type	6" Pitch Chain Edge PVC
Curves	30°, 45°, 60°
Frame	Formed or Open style with access panels
Drive	H.P. Size per application
Drive Sprocket	8 Tooth 12" P.D.
OPTIONS	
Belt width, drive, drive location, fixed or variable speed, controls, paint, hopper, supports: Belting - Consult factory	



## Pallet Pro Conveyor

Titan's **Pallet Pro** Heavy Duty Plastic Belt Conveyor solves the problem of conveying and transferring pallets that are irregular, imperfect or peg type pallets better than standard roller type conveyors. The heavy duty plastic belt enables end or side loading, allows for minimum transfer gaps and is bi-directional.



MODEL PALLET PRO	
STANDARD	
Belt Widths	12" to 62 3/4"
Lengths	Per application
Belt Type	Plastic, Uni-Belt
Drive	1 H.P. 230/460/3/60
Frame	4 3/4" deep 7 gauge
Deck	7 ga., U.H.M.W. top
OPTIONS	
Drive location, drive sprockets, speeds, controls, galvanized or stainless construction, supports, belt type, paint	

## Table Top Conveyor

Titan **Table Top Conveyors** can serve your transporting, merging, diverting or accumulation problems. Table Top Conveyors can solve a wide range of processing requirements including labeling, production inspection, product filling and weighing. Stainless Steel options are available for food and clean room handling.

MODEL TABLE TOP	
STANDARD	
Belt Widths	3 1/4", 4", 4 1/2", 6", 7-1/2"
Belt Type	Plastic, carbon steel or stainless
Lengths	Per application
Curves	Per application
Drive	1/2 H.P. 230/460/3/60
Frame	7" deep formed 12 ga.
OPTIONS	
Stainless construction, Interlox belt, customized siderails, Bottom or side mount drive, Fixed speeds - specify speed required, variable speed with DC motor and SCR controller or AC inverter, Paint choice	



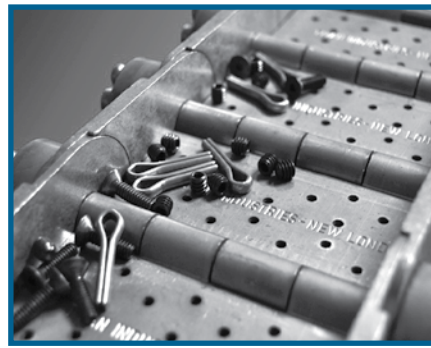
# Steel Belt Conveyors

## Model 610 Hinged Steel Belt Conveyor

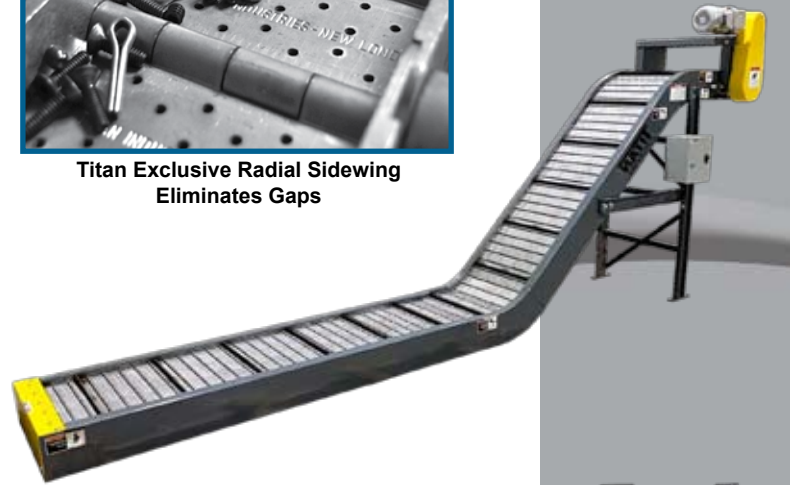
**Model 610** - 2 1/2" hinged steel belt conveyor is ideal for chip removal from machining operations. It's low profile, flared infeed siderails and liquid tight bottom pan make it the ideal scrap removal conveyor

## Model 620 Hinged Steel Belt Conveyor

**Model 620** - When an application requires a low profile frame. The **Model 620** can be furnished with either stamped low profile sidewings or the exclusive Titan powdered metal sidewing which virtually eliminates any gap between the sidewing and apron, thus reducing jamming problems.



Titan Exclusive Radial Sidewing  
Eliminates Gaps

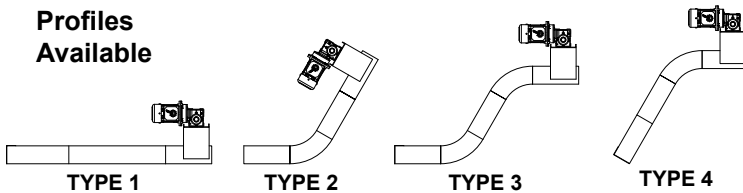


## Model 630 Hinged Steel Belt Conveyor

**Model 630** - The Model 630 Titan Hinged Steel Belt Conveyor is the full profile unit in our complete line of hinged steel belt conveyors. The Model 630 is constructed of 10 gauge frame and 3/16" thick track. Four different configurations are available to provide complete flexibility to fit your requirements. A 2-1/2" pitch belt with 1-1/2" high stamped sidewings and 12 gauge apron is furnished as standard.



### Profiles Available



2-1/2" PITCH HINGED STEEL BELT MODELS			
	MODEL 610	MODEL 620	MODEL 630
	Standard	Standard	Standard
Belt Width	6" to 24"	6" to 36"	6" to 36"
Belt Type	2-1/2" pitch radial sidewing	2-1/2" pitch low profile or radial sidewing	2 1/2" pitch 1-1/2" standard stamped sidewing
Curves	30°, 45°, 60°	30°, 45°, 60°	30°, 45°, 60°
Frame	6-11/16" deep formed 12 ga.	7" deep formed 10 ga.	8-5/8" deep formed 10 ga.
Drive	1/2 H.P. 230/460/3/60	1/2 H.P. 230/460/3/60	1/2 H.P. 230/460/3/60
Drive Sprocket	5 Tooth, 4.25" P.D.	5 Tooth, 4.25" P.D.	6 Tooth, 5" P.D.
Chain Pull	1,200 lbs.	2,500 lbs.	2,500lbs.
<b>OPTIONS</b>			
Drive location, H.P., fixed and variable speed, controls, tanks, chutes, plumbing, top covers, chip suppressors, casters, liquid tight bottom pans, paint, supports, Belt: pimpled, perforated, welded barrels, impact plates, wiper cleats, cleat heights, sidebars on narrower belts			
Many other options available, consult factory representative			

# Steel Belt Conveyors

## Model 640 4" Hinged Steel Belt

**Model 640** - 4" pitch hinged steel belt conveyor offers heavy duty suitable for automotive and foundry applications.



STANDARD SPECIFICATIONS		
	MODEL 640 - 4" PITCH	MODEL 660 - 6" PITCH
Belt Width	6" to 72"	12" to 96"
Belt Type	4" pitch, 10 ga. apron	6" pitch x 1/4" apron
Curves	30°, 45°, 60°	30°, 45°, 60°
Frame	15" deep formed 10 ga.	21" deep formed 7 ga.
Drive	1/2 H.P. 230/460/3/60	3/4 H.P. 230/460/3/60
Drive Sprocket	6 Tooth, 8" P.D.	6 Tooth, 12" P.D.
Chain Pull	4,000#	8,900#
OPTIONS		
Drive location, H.P., Fixed and variable speed, Impact rails on infeed frame, T-slot bearings, customized siderails, infeed hoppers, casters, Liquid tight bottom pans, coolant tanks, plumbing, top covers, paint, supports, Consult factory for special applications and construction of belt.		



## Model 660 6" Hinged Steel Belt

Large scrap handling systems dictate using a rugged steel belt. By using the unique Titan 6" pitch belting, the **Model 660** will satisfy most heavy-duty scrap handling requirements. Our uniquely designed sidewing reduces the gap between sidewing and apron (eliminating carryover) and yet the rugged (1/4" thick) design compensates for most severe applications.



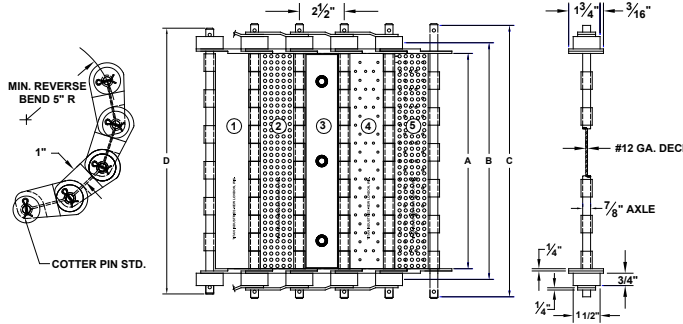
# Hinged Steel Belt

*Titan makes replacement Hinged Steel Belt replacements for any manufacturer. Call factory for details, save money and time.*

## 2 1/2" pitch Exclusive Titan Radial Sidewings

### Close the Gap

With exclusive Titan Powdered metal sidewings, the opening between sidewings and apron is reduced to a maximum of .010". Tight tolerance is maintained regardless of direction of belt flex. Aprons are available in plain, perforated or pimpled styles. All belts delivered from stock components. Detail drawings on request.

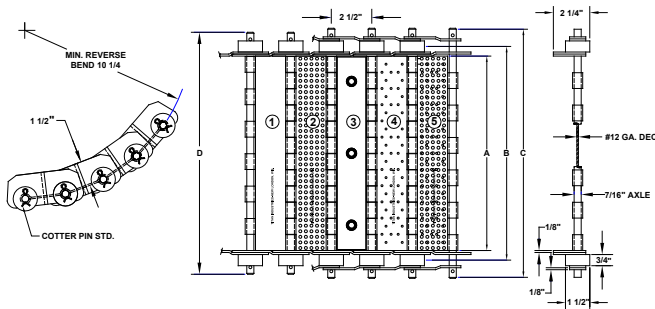
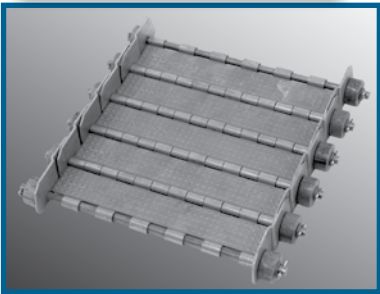


Available in 2-1/2" Pitch Only



Perforated belt shown

## 2 1/2" Pitch Belts

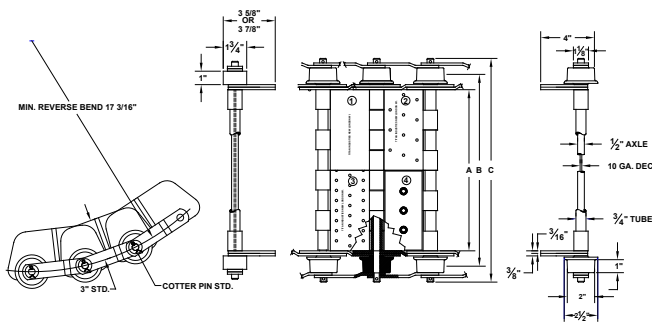


Chain Pull: 1200#  
2500# (with side bar)

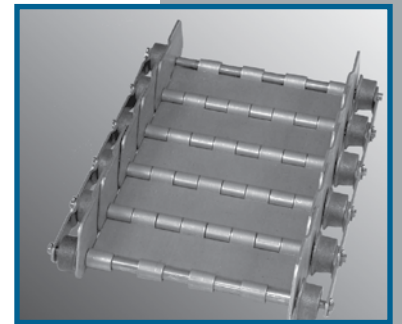
Titan hinged steel belt was developed to handle stampings, metal scrap, paper scrap, chips, turnings, castings and parts, plus numerous other materials. The standard 2 1/2" pitch belt is interchangeable with other conveyor or belt manufacturers. All parts on standard belts are available from stock. Standard profile and low profile sidewings are available. Belt widths from 4" to 48" in increments of 2".

## 4" Pitch Belts

The Titan 4" pitch hinged steel belt contains the 2" diameter flanged roller as a standard feature - without additional cost. The flanged rollers aid belt tracking. When Titan belts are used to replace those of other manufacturers, Titan can supply those belts with regular flat face rollers if needed. If extra impact absorption is needed for rough loading conditions, Titan will add reinforcement bars to the 10 gauge apron.



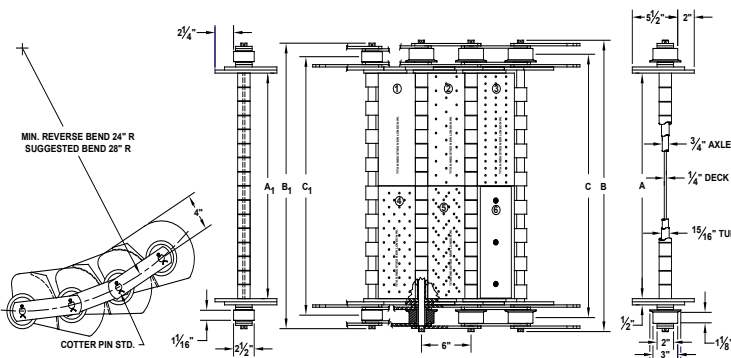
Chain Pull: 4000#



## 6" Pitch Belts



Welded Barrels shown



Chain Pull: 8900#

A genuine heavy-duty belt equal to the demands of sophisticated, automatic scrap handling systems. Belts feature full 1/4" thick apron and sidewings, a 15/16" tube with a 3/4" through pin, and die formed hinges which eliminate the usual weld bead. Belts also have 3" diameter single flange cast iron rollers with hardened bushings. Titan will also supply them with flat face roller. Titan 6" pitch belts are available in dimpled, plain or perforated styles.

# Steel Belt Conveyors

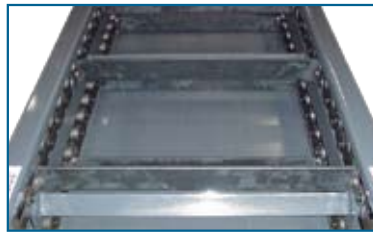
## Quench Conveyor

Titan's **Quench Conveyor** is designed to quench or cool heavy-duty parts. It's built with a liquid tight horizontal tank. It can be supplied with wire mesh belt, plastic or steel belt.



## Drag Chain Conveyor Model 670

The **Model 670 Drag Flight Chain Conveyor** is ideal for handling cast iron, fine chips, scrap or sludge that would jam a Hinged Steel Belt unit. The 2-1/2" pitch chain has drag flights welded on 12-1/2" centers. Various configurations, lengths and belt widths from 6" to 36" are available. Frame 10 ga. x 8 5/8" deep.



## "Pro Feed" Model 350

Titan **Model 350 "Pro Feed"** conveyor can handle a wide variety of parts from very small to odd shapes. Our exclusive Radial sidewing design eliminates trapping of parts.



Special discharge chute

Custom hopper for delicate parts



MODEL 350 "PRO FEED" SPECIFICATIONS	
STANDARD	
Belt Width	6", 8", 12", 18"
Discharge Ht.	6' 0"
Belt Type	2-2/2" pitch hinged steel
Drive	1/2 H.P. 230/460/3/60
Hopper	7 cu. ft.
Frame	Formed 10 ga. - 6 15/16" Dp.
OPTIONS	
Custom Hopper, Discharge heights, Discharge chute, Belt widths, Belt type, Speed, Variable speed, Controls, Drive, Galvanized, Stainless, Casters, Paint, Hopper size - Consult factory	

# Steel Belt Conveyors

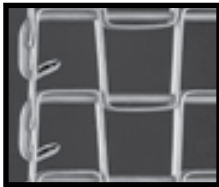
## Model 124 Wire Mesh Belt Conveyor



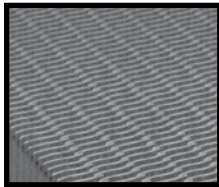
Titan **Model 124** Wire Mesh Belt Conveyors can be used to convey hot, oily, or cold products in cooling, oven or other special spraying and drying conditions. Titan offers either a Roller Bed Deck or Wear Strip Deck to meet your material handling needs.

MODEL 124 SPECIFICATIONS	
STANDARD	
Belt Widths	8", 12", 18", 24", 30", 36", 42", 48"
Lengths	5' min. based on application
Belt Type	1/2" x 1" galvanized flat wire mesh
Drive	1/2 H.P. 230/460/3/60
Speed	60 f.p.m.
Drive Sprocket	13 tooth, 4.4" P.D., H.D., Keyed
Frame	Formed 10 ga. - 6 1/2" Deep
Deck-Wear Strip	Longitudinal steel wear strips
Deck-Roller Bed	1.9 Dia. x 16 ga.
OPTIONS	
H.P., drive location, speed, fixed or variable speed, controls, other belt types, belt widths, deck wear strip options, center drive & take-up, galvanized, stainless, siderails, supports, casters, special paint	

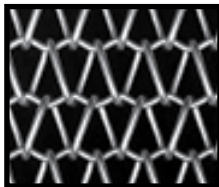
### Belt Options- Consult Factory



Flat Wire



Plastic



Balance Weave



## Model 305 Wire Mesh Belt Conveyor

Titan **Model 305** Wire Mesh Belt Conveyors are ideal for heat treated, washed, dried or quenched parts.

MODEL 305 SPECIFICATIONS	
STANDARD	
Belt Widths	4", 6", 8", 12", 18", 24", 36"
Lengths	5' min. to 20' max.
Belt Type	1/2" x 1" gal. flat wire mesh w/ 1-1/2" high cleats on 12" centers
Drive	1/2 H.P. 230/460/3/60
Drive Sprocket	13 tooth, 4.4" P.D., H.D., Keyed
Frame	6-1/2" deep formed 12 g.a.
OPTIONS	
Fixed speed, variable drives, controls, side mount/bottom mount drive, belt widths, belt type, siderails, hopper, discharge chute, galvanized, stainless, knee braces, ceiling brackets, supports, casters, special paint, cleat height - consult factory	





# Steel Belt Conveyors

## Cooling/Drying Conveyor

Titan's **Cooling/Drying** conveyor replaces water quench and reduces cool down time. Custom designed from standard components. Consult factory.



Wire Mesh Belt



Steel Slat Belt



Hinged Steel Belt

## Slat Conveyor

**Titan Slat Conveyors** are ideal for assembly line, appliance and furniture production applications where a flat carrying surface is needed and where product movement is slow through work stations. Slat conveyors are also used for transportation, accumulation, side loading and unloading and frequent stop/start applications



SLAT CONVEYOR SPECIFICATIONS	
STANDARD	
Slat Widths	12" to 24" (to 72" available)
Drive	H.P. to suit application
Speed	30 f.p.m.
Slats	Formed 7 ga.
Frame	Formed 7 ga.
Belt	6" pitch (SR196)
OPTIONS	
Drive location, speed, Slat widths to 72", Slats - Wood or UHMW covered, Belt - 4" pitch (SR194), H.P., work leaves, push offs, fixtures mounted on slats, special paint	

# Roller Conveyors

## Chain Driven Live Roller Conveyor

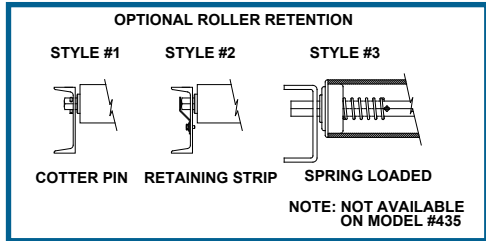
**Chain Driven Live Roller (CDLR)** conveyors feature sprocketed rollers and roll to roll chain system that provide positive driving power to the product. Pop-up chain transfers, stops, pin stops and other options are available on all models.

**Titan Model 519** light duty chain driven live roller conveyor is ideal for tote pans, castings, drums or light pallet loads.

**Titan Model 525** medium duty chain driven live roller conveyor is ideal for pallets, skids and drums.

**Titan Model 526** medium-heavy duty chain driven live roller conveyor is ideal for pallets, skids and drums. With a thicker walled roller than the Model 525, the Model 526 will handle loads 2 times heavier than the Model 525.

**Titan Model 535** heavy duty chain driven live roller conveyor is ideal for pallets, skids and drums.



CHAIN DRIVEN LIVE ROLLER CONVEYOR SPECIFICATIONS				
STANDARD				
	MODEL 519	MODEL 525	MODEL 526	MODEL 535
Effective Widths	12" to 50"	15" to 72"	15" to 80"	15" to 114"
Lengths	Per application	Per application	Per application	Per application
Roller Size	1.9" Dia. x 16 ga. with 7/16" hex shaft	2 1/2" dia. x 11 ga. with 11/16" hex shaft	2 5/8" dia. x 7 ga. with 11/16" hex shaft	3 1/2" dia. x .300 wall on 6" centers (#2500 roll rating)
Roller Center	Various	Various	Various	Various
Frame	Formed 10 ga.	Formed 7 ga.	Formed 7 ga.	Structural channel
Drive	1/2 H.P. 230/460/3/60	3/4 H.P. 230/460/3/60	3/4 H.P. 230/460/3/60	3/4 H.P. 230/460/3/60
Chain Drive	#40	#50	#50	#60
OPTIONS				
Roller Space - Consult factory, Roller Center - Consult Factory, Drive locations: as needed, Galvanized or stainless construction, H. P. , Speeds, Variable speed, Controls, Paint, 2 or 3 strand chain transfers, Pallet lifts, "C" Face brake and Fixed end stop, Rollers set low, UHMW sleeves and Knee braces, Air operated blade stop, Supports - 6" @ #8.2 structural channel, Chain - #80 with roller on 6 7/16" centers (Model 535),				

# Roller Conveyors

## Chain Driven Live Roller Curve Conveyor

**Titan Model 595** heavy duty chain driven live roller curve conveyor is ideal for pallets, skids and drums. Modular design fit system applications



MODEL 595 SPECIFICATIONS	
STANDARD	
Effective Widths	15" to 72"
Curves	90°
Rollers Size	2 1/2" dia. small end tapered x 11 ga. and #50 chain
Chain Drive	#50 roller to roller
Drive	3/4 H.P. 230/460/3/60
Frame	6" @ #8.2 structural channel
OPTIONS	
Curves - 30°, 45°, 60° available, Drive - as needed, Chain - #60, Rollers - 2 1/2" dia. x 11 ga. (straight), Speeds, Variable speed, Controls, Supports, Paint, Stainless or Galvanized construction, Casters	

## Zone Accumulation

**Titan Zone Accumulation Conveyors** are designed to accumulate products and containers into zones without contact, commonly termed "Zero Pressure Accumulation" or "ZPA". Available "Plug & Go" logic makes control easy and reduces cost.

### Styles:

1. Zones have individual conventional drives.
2. Zones are engaged by air clutch from a single drive.
3. Zones have individual motorized roller drives.

Titan offers designs compatible with all models and types of roller conveyors.



[www.titanconveyors.com](http://www.titanconveyors.com)  
email • [sales@titanconveyors.com](mailto:sales@titanconveyors.com)

**TITAN**  
CONVEYORS

## Motorized Driven Roller Conveyor

Titan Conveyors™ introduces the Motorized Driven Roller (MDR) Conveyor, a modular conveyor system utilizing a 24 volt DC motorized drive within a roller. Adjacent rollers are slave-driven from it using chains, V-belts, or O-belts. Loads up to 3900# can be moved with these clean and efficient motorized roller systems.

### The advantages of the Motorized Driven Roller Conveyor are:

- Modular design improves layout/easy to reconfigure
- Run on demand/less noise, wear, and energy
- Non-contact zero pressure/product protection
- Compact low profile/multi-level usage
- Reversible/less hardware required
- No scheduled maintenance/lower operating cost
- Improves working environment (quieter, safer, better ergonomics and cleaner operation)
- Lower power consumption
- Low voltage/safety and lower cost
- Simple installation/lower cost
- Soft start and stop/low G-forces
- Simplifies conveyor operations
- Improves material flow
- Variable speed/versatility to suit each requirement
- Choice of control level to meet needs and budget

Motorized Driven Roller conveyors are perfect for large zone controlled systems in assembly lines or unit handling of pallets and cases.



Motorized Roller Conveyor with 2-Strand Pop-up Chain Transfer



### Chain & Belt Drive Options



Chain Driven Roller



Poly Flat Belt Driven Roller



Urethane Belt Driven Roller



### Belt or Chain Driven Motorized Driven Roller Conveyor Specifications

	Model MDR (Urethane O-Belt)	Model MDR (Chain to Chain & Poly V-Belt) 1.9" dia. roller	Model MDR (Chain to Chain & Poly V-Belt) 2-1/2" dia. roller
<b>Effective Widths</b>	13" to 42"	13" to 42"	13" to 72"
<b>Lengths</b>	3' Min.	3' min.	3' min.
<b>Roller Size</b>	1.9" Dia. x 16 ga. with 7/16" hex shaft	1.9" Dia. x 16 ga. with 7/16" hex shaft	2.5" Dia. x 11 ga. with 11/16" hex shaft
<b>Roller Center</b>	2-1/4", 3", 4", or 6"	4", 6", 12"	2-13/16", 3-7/16", 4-3/8", 5", 6", 10"
<b>Frame</b>	Formed 10 ga.	Formed 10 ga.	Formed 7 ga.
<b>Drive</b>	Itoh Denki 24 Volt DC Motor Driven Roller	Itoh Denki 24 Volt DC Motor Driven Roller	Itoh Denki 24 Volt DC Motor Driven Roller
<b>Roll to Roll Drive</b>	Poly O-Belt	Poly V Belt or #40 Chain	Poly V-Belt or #40 or #50 Chain

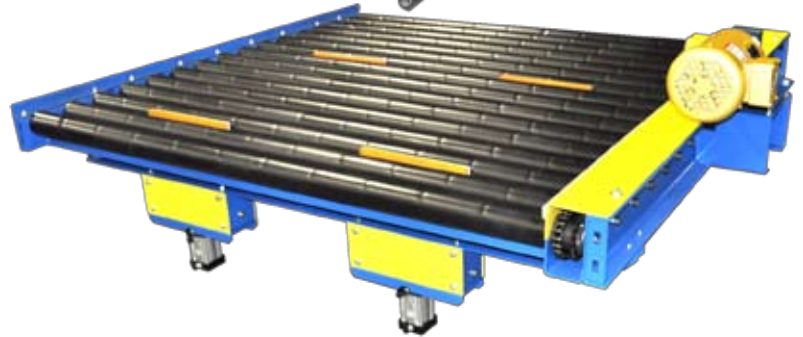
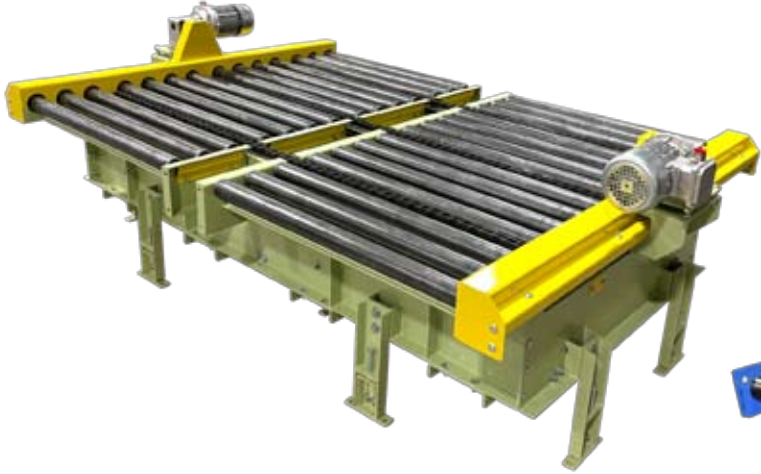
#### OPTIONAL

Roller Centers - Consult Factory, Galvanized or stainless construction, Controls, Coated rollers, Paint, 2 or 3 strand chain transfers, Pallet lifts, End stops, UHMW sleeves, Air operated blade stop, Supports

# Roller Conveyors

## Pop-Up Transfers and Stops

**Titan Pop-Up transfers & stops** are designed for integration into Titan roller conveyor systems.



## Pallet Destacker-Dispenser

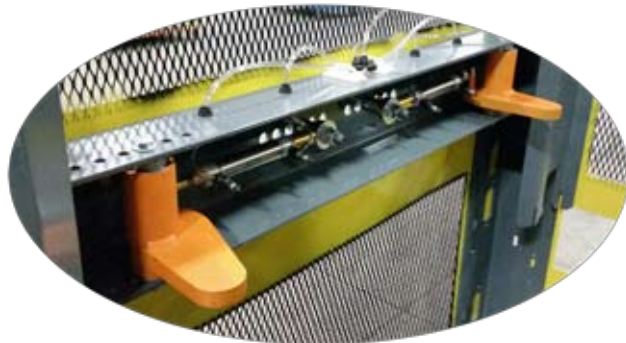


**Titan Destacker Pallet Dispenser** is designed to stack or destack pallets in automated pallet handling systems. No more stacking or destacking products by hand as operation is smooth and delivers the pallets exactly as you need them. Stackers & destackers will increase production and efficiently improve ergonomics in your operation. All of our destackers are custom built to meet your needs.

**Titan Destacker Pallet Dispenser** can be designed and built specifically to handle a variety of products such as:

- Wood Pallets
- Plastic Pallets
- Totes
- Trays
- Racks
- Full Pallet Loads

Consult your Titan Representative for further details.



### Engineered to fit any application

- Your choice of hydraulic, pneumatic or electro-mechanical power
- Heavy duty construction
- Dispense wood, plastic, metal pallets
- Interface with existing systems
- Control packages available
- Forklift and automatic load models

[www.titanconveyors.com](http://www.titanconveyors.com)  
email • [sales@titanconveyors.com](mailto:sales@titanconveyors.com)

**TITAN**  
CONVEYORS™

# Roller Conveyors

## Belt Driven Live Roller Conveyors

**Titan Model 402** is ideally suited for horizontal conveying items where transfer, unloading, sideloading or accumulation is required in light duty applications. Ideal for small items where close standard roller spacing is required.

**Titan Model 404** is ideally suited for medium duty horizontal conveying items where transfer, unloading, sideloading or accumulation is required in light duty applications.

**Titan Model 408** for applications demanding heavy duty belt driven live roller.



BELT DRIVEN LIVE ROLLER CONVEYOR SPECIFICATIONS			
STANDARD			
	MODEL 402	MODEL 404	MODEL 408
BF Dimensions	10", 13", 16", 19", 22"	13", 16", 19", 22", 25", 28", 31", 34", 37", 40"	13", 16", 19", 22", 25", 28", 31", 34", 37", 40", 42", 48", 54", 60"
Lengths	3' Min. to 50' Max.	3' Min. to 100' Max.	3' Min. to 100' Max.
Roller Size	1 3/8" dia. x 18 ga. with 5/16" hex axle	1.9" x 16 ga. with 7/16" hex axle	1.9" x 16 ga. with 7/16" hex axle, 42"+ 2.5" x 11 ga.
Roller Centers	6", (3", 4-1/2" Options)	6", (3", 4-1/2" Options)	6", (3", 4-1/2" Options)
Belt Type	PVC 120	PVC 120	PVC 120
Frame	6 1/2" deep formed 12 ga.	6 1/2" deep formed 12 ga.	11" deep formed 12 ga.
Drive	1/2 H.P. 230/460/3/60	1/2 H.P. 230/460/3/60	1/2 H.P. 230/460/3/60
Drive Pulley	4" dia. crown faced rubber lagged	4" dia. crown faced rubber lagged	8" dia. crown faced rubber lagged
OPTIONS			
Belt Type, Drives - Fixed speeds-specify speed req., variable speed with DC motor and SCR controller or AC inverter, Motor - 3/4, 1, 1-1/2, 2 HP, TEFC, severe duty, inverter duty, brake motor, Controls, Internal take-up, Center drive, 1", 3 1/2", & 6" side rails available, Casters - 4' or 6" rigid, Side mount drive, Knee braces/ceiling hangers, Bolt on bottom pans, Rollers on 1 1/2" centers, Galvanized or Stainless steel construction			

## Belt Driven Roller Curve

**Titan Model 490** belt driven roller curve features tapered rollers to maintain product orientation. The Model 490 is compatible with many other Titan models.

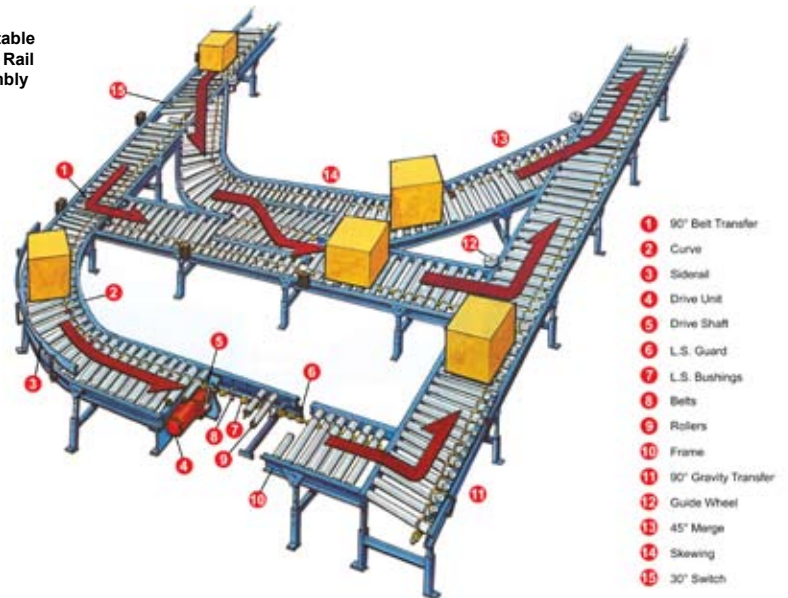
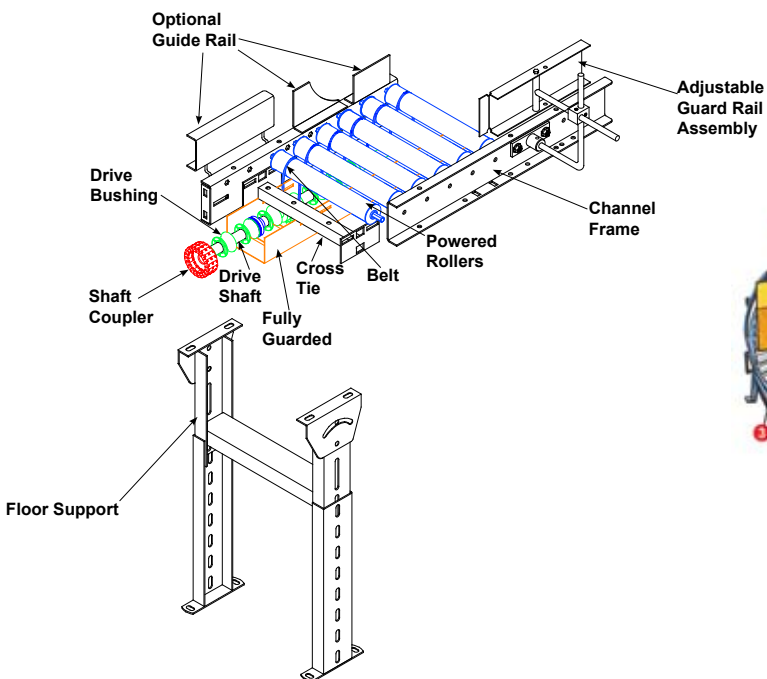
MODEL 490 SPECIFICATIONS	
STANDARD	
Between Frame-Straight Rollers	13", 16", 19", 22", 25", 28", 31", 34", 37", 40"
Between Frame-Tapered Rollers	13", 16", 22", 28", 34", 40"
Curves	90° standard, (30°, 45° Opt.)
Rollers	1.9 dia. x 16 ga.
Drive	1/2 H.P. 230/460/3/60
Frame	Formed 12 ga.
OPTIONS	
Roller sizes, siderails, caster, transfer rollers, galvanized, coated, tapered rollers, stainless or galvanized construction, motors, speeds, variable speed, drive location, casters, controls, paint, supports	



# Roller Conveyors

## Line Shaft Conveyor

Titan PATHWAY™ Line Shaft conveyors are the most economical way to transport, manage and manipulate boxes and totes.



Up to 100 lbs. per lineal foot capacity

### STANDARD COMPONENTS

Width BF - 13", 16", 22", 28", 34", 40"  
 Roller Centers - 2 1/4", 3", 4", 6"  
 Rollers 1.9 dia. x 16 ga. **Drive Section**  
 Drive - As selected from factory  
 230/460  
 2'0" in length includes bed, motor base, drive guard and assembly of drive package  
 Paint - 1 coat gray  
 Speed - As selected through factory counsel

### Curve Section

Width BF - 13", 16", 22", 28", 43", 40"  
 Fully Assembled  
 20 true taper rollers in 90° curve

### STANDARD COMPONENTS

**90° Urethane Belt Transfer Section**  
 Air Actuated (4) 3/8" dia. urethane transfer belts

**Power Cross Over Section**  
 Standard system compatibility

**Wheel Divert Section**  
 Standard system compatible  
 High speed urethane divert wheels

**Gate Section**  
 3'0" or 4'0" length

### OPTIONS

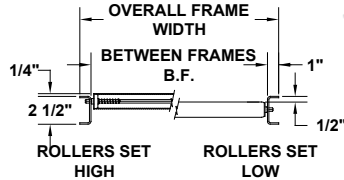
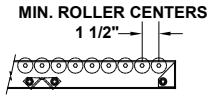
Controls  
 Supports "H" type  
 Plastic coated rollers  
 1" - 3 1/2" side rail  
 1 3/8" dia. x 18 ga. rollers  
 Hand operated stop  
 Air operated stop  
 Knee braces  
 Ceiling hanger brackets  
 Turning Wheel  
 Traffic cop  
 Accumulation zone - 18", 24", 30", 36"  
 Sensor rollers  
 Special paint  
 Consult factory for special operating conditions

# Gravity Conveyor

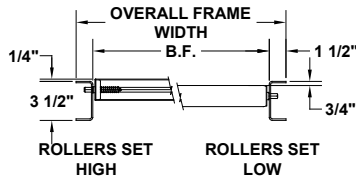
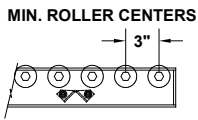
Titan Models 413, 419, 425, 426 and 435 gravity roller conveyors provide an economical means of carrying light to heavy weight packages and products.



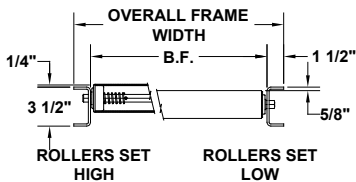
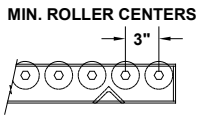
## MODEL 413



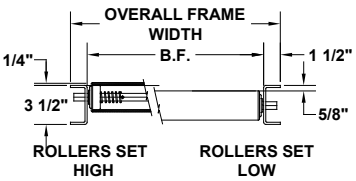
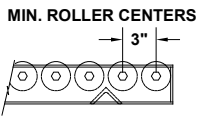
## MODEL 419



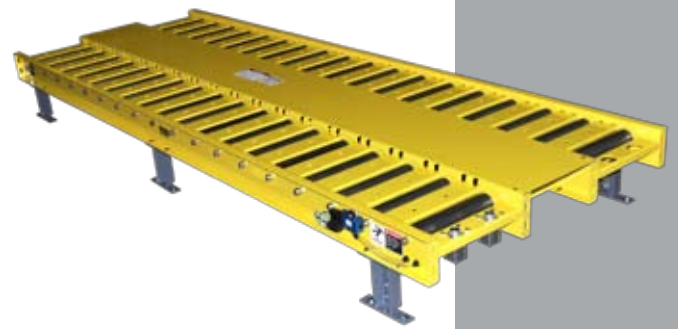
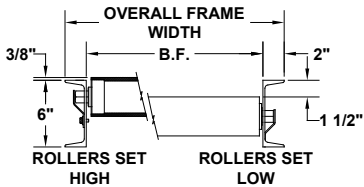
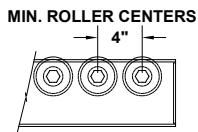
## MODEL 425



## MODEL 426



## MODEL 435



**GRAVITY CONVEYOR OPTIONS**  
 Supports, siderails, casters, pop-up stops, fixed end stops, manual gates, galvanized, coated, plastic or stainless steel rollers

Gravity Conveyors - CAPACITY PER ROLLER		
MODEL 413	12 ga.	50 lbs.
MODEL 419	10 ga.	250 lbs.
MODEL 425	7 ga.	625 lbs.
MODEL 426	7 ga.	650 lbs.
MODEL 435	Structural	2,500 lbs.

# Ball Transfer Table

The Titan Ball Transfer Table is used for manually rotating, shifting, turning, positioning at work stations a wide variety of products.





# Specialty Conveyors

## Multi-Strand Chain Conveyor

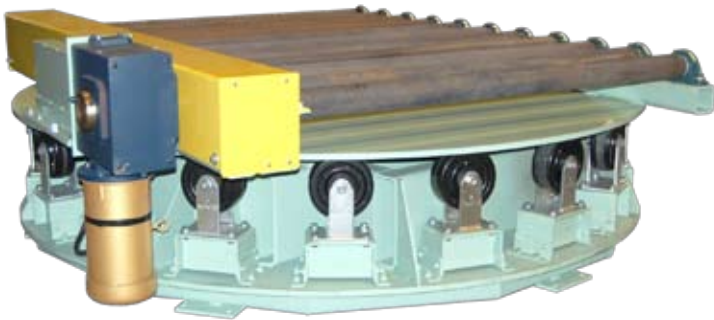
**Titan Multi-Strand** chain conveyor is ideal for heavy duty unit loads. Best suited for products with unusual characteristics such as pallets or heavy tote pans. Chains can be customized with fixtures. Many options are available.



## Turntables/Rotary Accumulator

**Titan turntables** are useful for providing directional change in a conveyor line. Turntables are used for loading and unloading pallets and containers, as well as improving the ergonomics of workstations and for product accumulation.

MODEL 200 TURNTABLE SPECIFICATIONS	
STANDARD	
Diameter	Customer can specify
Drive	1/2 H.P. 230/460/3/60
Table Top	7 gauge
Drive Location	Bottom mount drive
Supports	Fixed structural, min. height 18" top of table
Speed	2.5 RPM fixed
OPTIONS	
H.P., variable speed, controls, siderails, air operated, conveyor on top, galvanized, stainless, special paint	



# Accessories

Titan offers a wide variety of conveyor accessories. Many are pictured on this page but contact your representative or call the factory for a complete list of optional equipment to make your conveyor or system work for you.



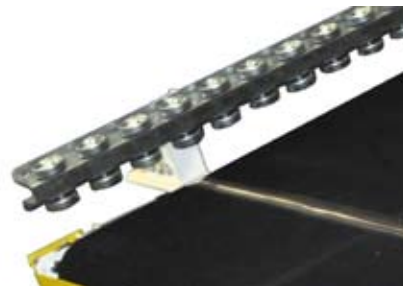
**Controls & Motors**



**Pins stops - Magnetic detectors - Work tables**



**Supports**

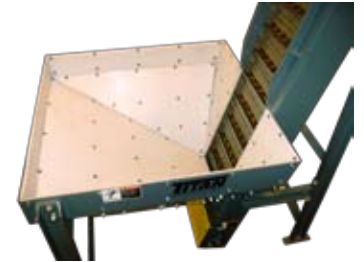


**Siderails -  
Fixed & Adjustable**

# Accessories



**Hoppers & Chutes**



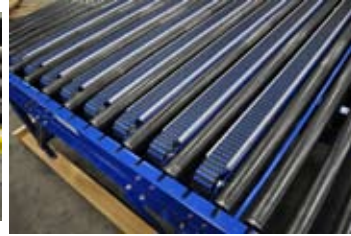
**Pallet Centering**



**Pallet Lifts**



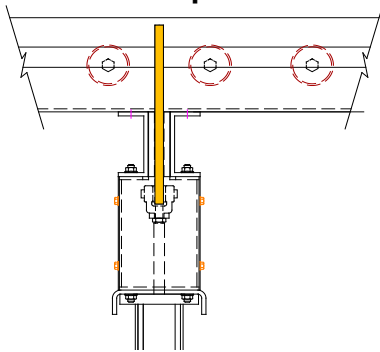
**Belt Transfers**



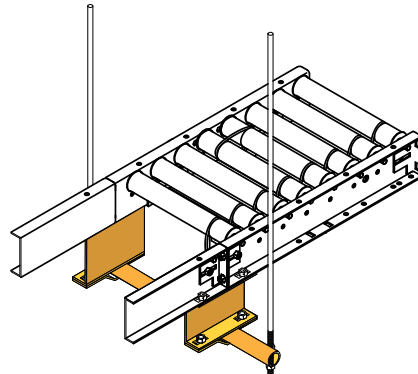
**Chain Transfers**



**Air Operated Blade Stops**



**Ceiling Hangers**



**Walkway Plates**



**Roller Covers**



# **TITAN**<sup>TM</sup> **CONVEYORS**

## **Warranty**

(A) Seller warrants that the material in and the workmanship on the equipment manufactured by TITAN will be free from defects at time of shipment. If during the first year from the date of shipment, the Buyer establishes to the seller's satisfaction that any part or parts manufactured by TITAN were defective at the time of shipment, TITAN will, at its own expense, repair or replace (but not install) replacement parts. For a time purpose of this warranty, one year will constitute 2080 hours of operation based on an 8 hour day. Sellers liability under this warranty is limited to replacement parts only and the seller will make no allowance for corrective work done unless agreed to by the seller in writing. Charges for correction of defects by others will not be acceptable, unless so authorized in writing, prior to the work being performed, by an officer of the company. Damage caused by deterioration due to extraordinary wear and tear (including, but not in limitation, use said equipment to handle products of a size, weight and shape or at speeds or methods which differ from information originally provided), chemical action, wear caused by the presence of abrasive materials or by improper maintenance or lubrication or improper storage prior to installation, shall not constitute defects. Failure to install equipment properly shall not constitute defects. Warranty does not cover consumable items. Warranty does not cover belt tracking or adjustment at installation or periodic adjustment that may be required during normal operation. Refer to the maintenance manual for belt tracking instructions.

(B) Seller has made no representation, warranties, or guarantees, expressed or implied, not expressly set forth on above paragraph. Seller shall not be liable hereunder for any consequential damages included but not in limitation, damages which may arise from loss of anticipated profits or production or from increased cost of operation or spoilage of material.

(C) The components used in manufacture of said equipment which were manufactured by others will carry such manufacturers' customary warranty, which seller will obtain for buyer upon request.

(D) No representative of TITAN has been conferred with any authority to waive, alter, vary or add to the terms of warranty state herein, without prior authorization in writing executed by an officer of the company.

(E) The foregoing is in lieu of any and all other warranties, expressed or implied, or those extending beyond the description of the product.

- **All specifications are subject to change without notice** •
- **Drawings are intended for illustration ONLY and are not to scale** •

**Titan Industries**  
735 Industrial Loop Road  
New London, WI 54961  
800-558-3616 • Fax: 920-982-7750  
Sales @ titanconveyors.com  
www.titanconveyors.com