

TITANTM **CONVEYORS**

Industrial Conveyor Specialists

Pallet Handling Conveyors

The TITAN Experience -
Expect More



Designed for years of
maintenance free
operation in hostile
environments

*Proven Reliability
Low Maintenance
Quick Delivery*

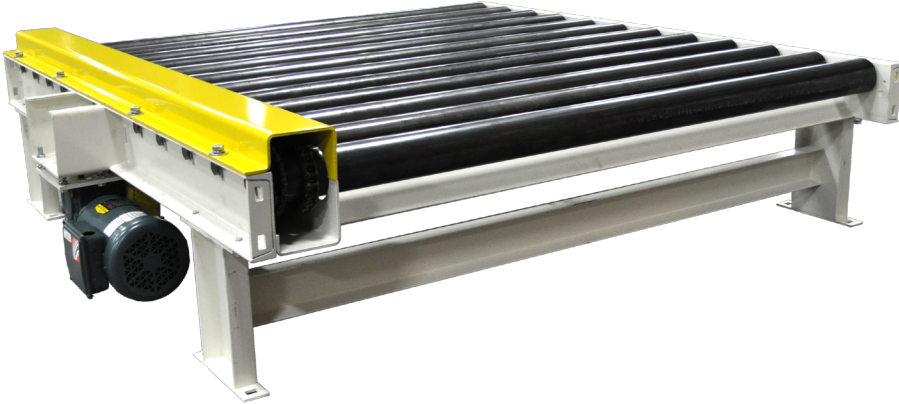
Since 1981

735 Industrial Loop Road
New London, WI 54961-2600
Phone: (920) 982-6600
Fax: (920) 982-7750
Toll Free: 1-800-558-3616

Website: www.titanconveyors.com
Email: sales@titanconveyors.com

Titan Conveyors™ manufactures a full line of standard Pallet Conveyors and accessories to handle every size, type, and weight of pallet. Even though 40" x 48" pallets with weights up to several thousand pounds are most common, our recent applications included moving 10,000 pound concrete bunkers and 8,000 pound steel coils. There is no configuration or pallet manipulation that Titan has not done in our 30 year history. Titan pallet handling systems are engineered with the understanding that they interact with fork trucks and need to be built tough. Accessories like roller coatings, blade stops, pin stops, crowders, side rails, positioners, lifts, and walk plates are all available as standard items, so they are proven and cost effective

Conveyors Typically Used for Pallet Handling

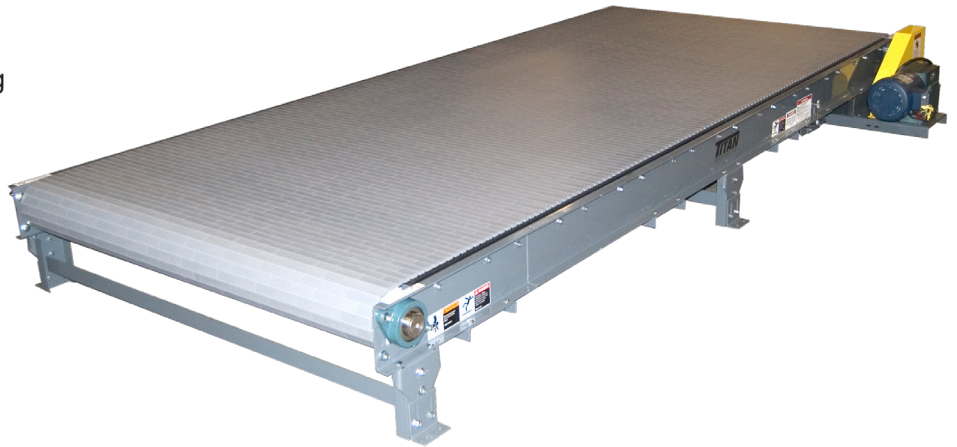


Chain Driven Live Roller Conveyors

(CDLRs) are great for handling heavy product with smooth bottom or on pallets. CDLR's are used for warehouse operations that handle steel sheet or structural shapes and using pallets or skids. Available in 12" to 114" effective widths and up to 3,000 lb roller capacity.

Pallet Pro - Plastic Belt Conveyors

The Titan Pallet Pro Heavy Duty Belt Conveyor solves the problem of conveying and transferring pallets that are irregular, imperfect or peg type pallets better than standard roller type conveyors. The heavy duty plastic belt enables end or side loading, allows for minimum transfer gaps and is bi-directional. Industries such as automotive, paper, corrugated, distribution, bottling, cardboard and others will benefit from this innovative design. Widths from 12" to 62 3/4"



Multi-Strand Chain Conveyors

Designed to move products that a standard roller conveyor can't, the Titan Multi - strand Chain Conveyor features a durable formed 7 gauge steel construction frame and is equipped with a standard double pitch chain that provides a 2,400 pound load capacity. Titan Chain Transfers can be combined with many types of roller conveyors for unloading or transfer of pallets and totes.

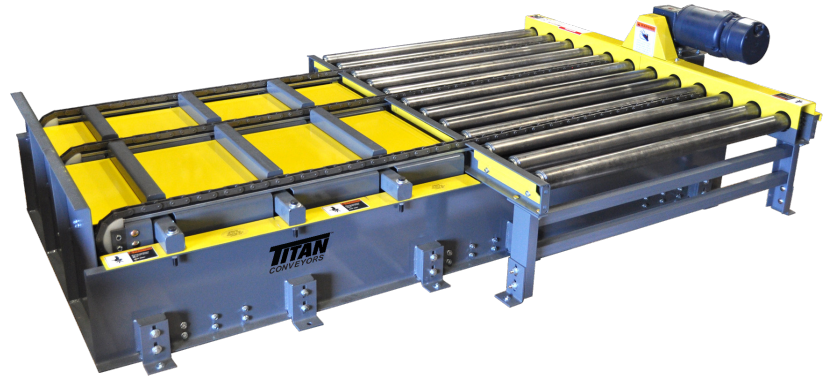


Accumulation Conveyors

Titan Zone Accumulation Conveyors are designed to accumulate products and containers into zones without contact, commonly termed “Zero Pressure Accumulation” or “ZPA”. Available “Plug & Go” logic makes control easy and reduces cost. Titan offers designs compatible with all models and types of roller conveyors.

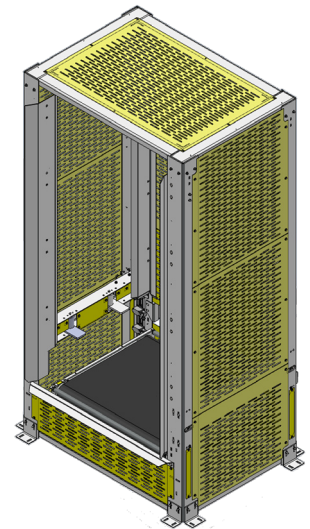
Chain Transfer Conveyors

Titan Chain Transfers can be combined with many types of roller conveyors for unloading or transfer of pallets and totes.



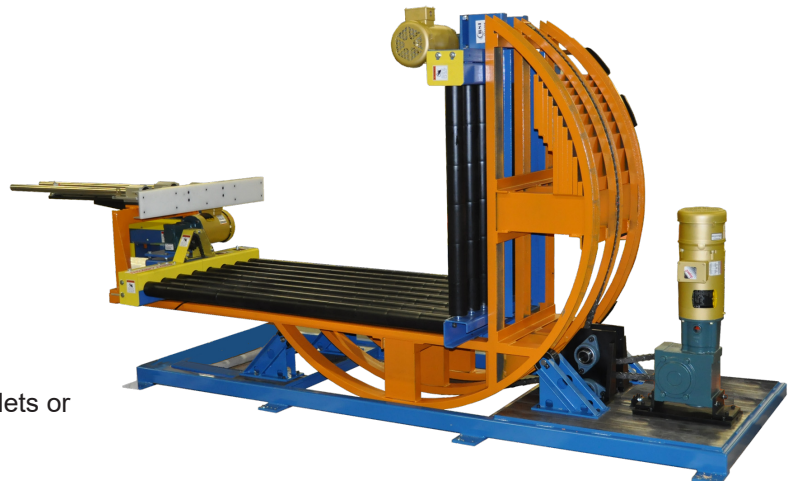
Pallet Dispensing Conveyors

Titan Destacker Pallet Dispenser is designed to stack or destack pallets in automated pallet handling systems. No more stacking or destacking products by hand as operation is smooth and delivers the pallets exactly as you need them.

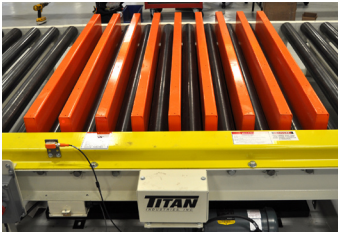


Pallet/Product Upenders

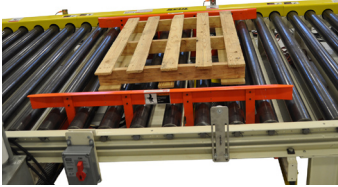
Designed to rotate or upend your pallets or product and transfer for loading.



Accessories & Options Available for Pallet Handling Conveyors



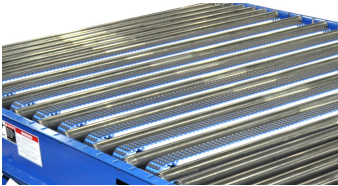
Pallet Lifts



Pallet Centering



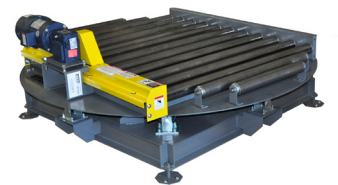
Chain Transfer



Belt Transfer



**"Iron Cross"
Lift & Turn**



**Conveyor on
Turn Table**

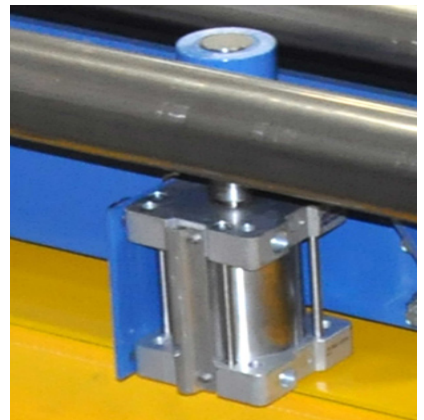
**Electric Eyes
& Controls**



Pallet Pushers



Pneumatic Stops



**Conveyor on
Air Lifts**



Forklift Slots



AUTHORIZED DISTRIBUTOR

